

Drummond

COMMUNITY HIGH SCHOOL



Senior Phase Course Choice Booklet 2022/23

Information for pupils and parents/carers

The Senior School Curriculum at DCHS

Our Senior Phase Curriculum will ensure that every learner has a personalised pathway from school into a positive destination. These pathways will be designed to meet the needs and aspirations of individual learners and have been designed to articulate with destinations in Higher and Further Education as well as with local labour market intelligence.

Our pathways through the Senior Phase ensure that each young person leaves school with the highest possible level of qualifications. Our pathways include a broad range of SQA courses and awards from SCQF level 3-7 and are implemented in collaboration with our partners from Edinburgh College, third sector organisations and industry.

We strongly believe that there is parity of esteem across all of our pathways and we are guided by the desire to ensure that every young person achieves their full potential and that they are fit for a full, active and satisfying life in the world beyond school.

Drummond CHS will again be running a revision programme during the Easter Holidays. This can be viewed shortly on the school website and details will be released via the school App.

Thank you for working in partnership with us to make your child 's progress as successful as possible. If you have any further questions about any of this information, or any other aspect of your child's progress, please do not hesitate to contact their Pupil Support Leader:

Annandale - Mr Michael Paley

Bellevue - Ms Maria Rawluk

Claremont - Ms Leah Rankin



Pathways at Drummond CHS

- National Qualifications from National 3- Advanced Higher
- National Progression Awards (NPA)
- College
- JET
- JET+
- Volunteering
- Foundation Apprenticeships (FA)
- Design Engineer Construct





Pathways at Drummond CHS

- National Qualifications from National 3 - Advanced Higher
- National Progression Awards (NPA)
- College
- JET
- JET+
- Volunteering
- Foundation Apprenticeships (FA)
- Design Engineer Construct

The Senior School Curriculum at DCHS

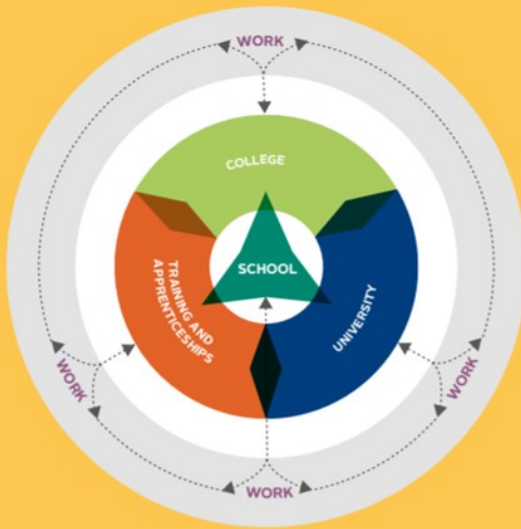
What will be your pathway to success?

The courses which are being offered for session 2022/23 are described in this booklet. Pupils and parents/carers should, however, note that only courses which have sufficient up-take will eventually run.

We offer a number of routes that promote and develop employability skills in our pupils. Some of our courses will be delivered in collaboration with local partners and these are key to ensuring our young people achieve a positive and sustained destination post 16.

After reading the information and consulting with our Careers Adviser, you should fill in the Learner Pathway Choice form (to be issued separately) and return it to your Pupil Support Leader when you have your one-to-one meeting. Parents will be invited to these meetings remotely. New for this session pupils will be provided with predicted next levels from all subjects in advance of their coursing meetings. Teaching staff will assist pupils by advising them of the appropriate levels of study for next session. Final choices should then be decided in consultation with parents/carers and Pupil Support Leaders.

Pupils will have a review of their course choice in August post SQA certification at the end of S4/5.



MYTH BUSTERS!!!!

- College is for less academic pupils - False!
- I need to go straight to University to get a degree - False!
- Apprenticeships are only relevant if I want to go into one of the 'trades' - False!
- A Foundation Apprenticeship is a low level, basic qualification – false!
- Employers only value academic qualifications - False!

What is the Senior Phase about?

It is about preparing for the next stage in your education and making you an attractive candidate for employment or training or further study. You should remember you have a range of options and school is only one of them.

There are many ways to enter the workplace, get a good job and have a successful career. School gets you to the starting line, you now get to choose the best route for you.

This diagram has been reproduced from the National Parent Forum Scotland (NPFS) publication called Career Education: A World of Possibilities (https://www.npfs.org.uk/wp-content/uploads/2015/09/NPFS_world_of_possibilities_1509_E.pdf)

The National Parent Forum produces a wide range of documents written in pupil and parent friendly language without jargon.

Careers Advice and Support

Our Careers Adviser (Sarah MacPherson) is in school on a regular basis to provide careers information, guidance and advice. She can help pupils to:

- ⇒ Choose courses, considering interests and abilities
- ⇒ Decide on a suitable career
- ⇒ Apply for jobs or training places
- ⇒ Apply to college or university courses
- ⇒ Access the website *My World of Work* <http://www.myworldofwork.co.uk>

Pupils should:

- ⇒ Request an interview to discuss their ideas and plans in detail with sarah.macpherson@sds.co.uk
- ⇒ Attend the careers clinic for careers information and job vacancy details

SCHOOL LEAVING DATES

The statutory school leaving dates in Scotland are as follows:

If you are 16 between 1 March and 30 September, you may leave school at the end of May when in S4.

If you are 16 between 1 October and the last day of February, you may leave at Christmas in S5.

Leaving School

Our school provides courses for all ability levels. In a few cases however some pupils may wish, with guidance, to consider whether they would prefer to leave and try for a job or some other form of education or training, such as a college place. Some employers still prefer to recruit 16-year-old school leavers (for certain jobs and especially Apprenticeships and Modern Apprenticeships).

Coursing Deadlines

Coursing interviews for S3-S5 will take place between 28th February and 10th March. Pupils will be provided with a one-to-one meeting with Pupil Support Leaders and parents/carers will be invited to attend via a TEAMs invite.

Pathways Available In School - New S4

Pupils should pick **seven courses** (this includes English/ESOL and Maths) for 4 periods each week plus PE, RME and PSE. Pupils are strongly advised to pick courses based on what they currently study in S3 (**8 courses**) to allow for progression and to maximise success in attainment and achievement. This could be a combination of National 3/4/5, NPA's, College and JET. SCQF courses at Levels 3-4 and some at Level 5 allow students to study a course without having to sit a final external examination. Assessment occurs throughout the year, and credit for units passed is recorded on a pupil's SQA National Certificate. Any pupil who wishes to study new courses must seek approval from Mrs Robertson, Mrs Sharp or Mrs Sloan.

Pathways Available In School - New S5 and S6

Pupils selecting Level 5/6 courses (National 5/Higher/NPA Level 5/6) should pick **five courses**.

If you are selecting courses at SCQF Level 3-4 (National 3/4/NPA Level 4) you must select **seven courses**.

Pupils are strongly advised to pick courses based on what they currently study in S4/5 to allow for progression and to maximise success in attainment and achievement. Any pupil who wishes to study new courses must seek approval from Mrs Robertson, Ms Sharp or Mrs Sloan.

If you decide to return for a Sixth Year, you will be expected to study at least **five courses** from the courses offered at SCQF Level 4-7. This could be a combination of Advanced Highers, Highers, National 4/5 courses, volunteering, College, NPAs and Foundation Apprenticeships. In exceptional cases – for example, when a student wishes to take a particularly demanding group of courses such as an Advanced Higher and three Highers – Pupil Support Leaders may agree that a student should take only four courses.

The table below indicates progression pathways for levels and compares different qualifications.

SCQF Levels	SQA Qualifications	Qualifications of Higher Education Institutions	SVQs/MAs
12		Doctoral Degree	Professional Apprenticeship
11		Masters Degree, Integrated Masters Degree, Post Graduate Diploma, Post Graduate Certificate	Professional Apprenticeship SVQ 5
10		Honours Degree, Graduate Diploma, Graduate Certificate	Professional Apprenticeship
9		Bachelors / Ordinary Degree, Graduate Diploma, Graduate Certificate	Technical Apprenticeship SVQ 4
8	Higher National Diploma	Diploma Of Higher Education	Technical Apprenticeship SVQ 4
7	Advanced Higher, Awards, Scottish Baccalaureate	Certificate Of Higher Education	Modern Apprenticeship SVQ 3
6	Higher, Awards, Skills for Work Higher		Modern Apprenticeship SVQ 3
5	National 5, Awards, Skills for Work National 5		Modern Apprenticeship SVQ 2
4	National 4, Awards, Skills for Work National 4	National Progression Award	SVQ 1
3	National 3, Awards, Skills for Work National 3		
2	National 2, Awards		
1	National 1, Awards		

THE SCOTTISH CREDIT AND QUALIFICATIONS FRAMEWORK

This Framework diagram has been produced to show the mainstream Scottish qualifications already credit rated by SQA and HEIs. However, there are a diverse number of learning programmes on the Framework, which, due to the limitations of this format, cannot be represented here. For more information, please visit the SCQF website at www.scqf.org.uk to view the interactive version of the Framework or search the Database.



School Based Qualifications - Courses and Levels available to study 2021/22

Later in the booklet are full course descriptions, entry requirements and progression pathways for all courses offered.

Course	SCQF Levels					
	2	3	4	5	6	7
Art & Design		✓	✓	✓	✓	✓
Biology		✓	✓	✓	✓	✓
Business & IT (NPA)				✓		
Chemistry		✓	✓	✓	✓	✓
Communications	✓					
Computing Science		✓	✓	✓	✓	
Creative Thinking Award				✓	✓	
Drama		✓	✓	✓	✓	
Design Engineer Construct				✓	✓	
Exercise & Fitness Leadership (NPA)					✓	
English		✓	✓	✓	✓	✓
ESOL		✓	✓	✓	✓	
French			✓	✓	✓	
Geography			✓	✓	✓	
Graphic Communication			✓	✓	✓	
Health and Food Technology			✓	✓		
History			✓	✓	✓	
Hospitality - Practical Cookery			✓	✓		
Lab Science (Skills for Work)			✓	✓		
Leadership Award				✓	✓	
Application of Mathematics		✓	✓	✓		
Mathematics			✓	✓	✓	✓
Media			✓	✓	✓	
Modern Studies			✓	✓	✓	
Music		✓	✓	✓	✓	
People & Society		✓	✓			
Physics		✓	✓	✓	✓	✓
Practical Woodworking			✓	✓		
Physical Education		✓	✓	✓	✓	
Religious Moral and Philosophical Studies (RMPS)			✓	✓	✓	
Sport & Recreation - (Skills for Work)			✓	✓		
Spanish			✓	✓	✓	
Travel & Tourism (Skills for Work)			✓	✓		



Pathways in the Senior Phase

A range of pathways are available to pupils in the Senior Phase that allow them to combine studies towards National Qualifications in school with work placements and vocational learning.

JET

The Job, Education and Training (JET) programme offers pupils the chance to attend a Work Experience Placement one day per week, every Friday throughout the school year. Pupils will also attend one period per week of JET training in school and spend the rest of their time in school working towards National Qualifications.

JET+

S4 winter leavers can apply for JET +. The programme is designed for young people who are focused on gaining practical experience from a full-time work placement. JET + has 100% success rate in progressing young people into a positive destination. Progression routes include employment, college, modern apprenticeships and training.

National Progression Awards

National Progression Awards (NPAs) are available in a variety of sectors, from Construction and Childcare to areas such as Digital Literacy and Social Software. They're aimed at assessing a defined set of skills and knowledge in specialist vocational areas. NPAs are offered at SCQF Levels 4-6 at Drummond CHS.

School College Partnership (SCP)

Edinburgh College provides a comprehensive list of courses available for pupils. These courses have minimum entry requirements but allow pupils to attend on a Tuesday and Thursday afternoon. This prevents any disruption to their studies in other classes. (see list of this year's offers later in the booklet).

YASS (Young Applicants in Scotland Scheme)

These courses are offered through Open University for only S6 students wishing to further their intellectual curiosity at SCQF 7. These courses are designed to bridge the gap between school and university, college or employment and helps motivated students stand out from the crowd. It encourages independent learning and builds confidence. Taking part in YASS develops key skills like time management and using an online study environment. Any student interested should speak with their Pupil Support Leader at their Learner Pathway Meeting.

Options at Drummond CHS

- National Qualifications from National 3 - Advanced Higher
- National Progression Awards (NPA)
- College
- JET
- JET+
- Volunteering
- Foundation Apprenticeships (FA)
- YASS



What can I study at Foundation Apprenticeship level?

- Accountancy
- Business Skills
- Civil Engineering
- Creative & Digital Media
- Engineering
- Financial Services
- IT Software Development
- Scientific Technologies
- Food & Drink Technologies
- Social Services & Healthcare
- Children and Young People

Foundation Apprenticeships

Foundation Apprenticeships are work-based learning opportunities for senior-phase secondary school pupils. Lasting two years, pupils typically begin their Foundation Apprenticeship in S5. Young people spend time out of school at the college or with a local employer and complete the Foundation Apprenticeship alongside their other courses like National 5s and Highers. It is a chance to get valuable work experience and gain an industry recognised qualification. It also lets pupils try out a career while they are still at school.

Who is it for?

FA are open to pupils entering 5th year. You must have the ability to study at SCQF level 6 (Higher equivalent) in a vocational setting, and meet the entry requirements of the course. Attainment is measured by ongoing assessment in college and in the workplace.

What Qualifications will I gain?

On successful completion of the course, you will achieve a Joint Qualification Certificate for the Foundation Apprenticeship in your chosen subject. This is a group Award at SCQF level 6 (equivalent of a Higher) which includes a National Progression Award (NPA) and a Scottish Vocational Qualification (SVQ). This qualification is recognised as being equivalent to a Higher by 11 Scottish Universities **for appropriate courses** and can also progress on to a Modern Apprenticeship or further study.

To find out more about Foundation Apprenticeships see your Guidance Teacher or access the following link. <https://www.edinburghcollege.ac.uk/information-and-advice/information-for-school-pupils-teachers-and-guardians>

FA - Children & Young People

Drummond CHS pupils can attend Liberton HS & Wester Hailes HS to study for the FA in Children & Young People. This course will be delivered by a training provider to 5th year pupils over two years: (6th year pupils can complete this in one year). At the end of year one pupils will be awarded an NPA level 6. Year 2 of the course will see pupils completing their work-experience within an industry setting. Pupils who successfully complete the FA will be guaranteed an interview for a Modern Apprenticeship with Edinburgh Council.

FOUNDATION APPRENTICESHIP TO COLLEGE OPPORTUNITY

- Accountancy
- Business Skills
- Civil Engineering
- Creative & Digital Media
- Engineering
- Financial Services
- Food & Drink Technologies
- ICT Hardware
- ICT Software
- Scientific Technologies
- Children & Young People
- Healthcare

College	Accountancy	Business Skills	Civil Engineering	Creative & Digital Media	Engineering	Financial Services	Food & Drink Technologies	ICT Hardware	ICT Software	Scientific Technologies	Children & Young People	Healthcare
Ayrshire College	●	↕	↕	●	↕	●	●	↕ ²	↕ ²	↕ ²	↕	●
Borders College	●	↕	↕	↕ ²	↕	●	●	↕	↕	●	↕	↕ ²
City of Glasgow College	↕	↕	↕	↕ ²	↕	●	●	↕ ²	↕ ²	●	↕ ²	↕ ²
Dumfries & Galloway College	↕	↕	↕	↕	↕	●	●	↕	↕	●	↕	↕
Dundee & Angus College	↕	↕	↕	↕	↕	●	●	↕	↕	●	↕	↕
Edinburgh College	↕	↕	↕	↕	↕	●	●	↕ ¹	↕ ¹	●	●	↕ ¹
Fife College	↕ ¹	↕ ¹	↕ ²	↕	↕	●	●	↕ ¹	↕ ¹	↕ ²	↕ ²	↕ ²
Forth Valley College	↕	↕	↕	↕ ²	↕	●	●	↕ ²	↕ ²	↕ ¹	↕	↕ ²
Glasgow Clyde College	↕	↕	↕	↕	↕	●	●	↕	↕	↕ ²	↕ ²	↕ ²
Glasgow Kelvin College	●	●	↕	↕	↕	●	●	↕	↕	●	↕ ²	↕ ²
New College Lanarkshire	↕	↕	↕	↕ ²	↕	↕ ²	↕ ²	↕ ²	↕ ²	↕ ²	↕ ²	↕ ²
North East Scotland College	↕	↕ ¹	↕	↕ ²	↕	●	●	↕ ²	↕ ²	↕ ²	↕ ²	↕ ²
South Lanarkshire College	↕	↕	↕	↕	●	●	●	↕	↕	↕ ²	↕ ²	↕ ²
University of Highlands and Islands	↕	↕	↕	↕	↕	↕ ²	↕	↕	↕	↕ ²	↕	↕
West College Scotland	↕	↕	↕	↕	↕	●	●	↕	↕	↕ ²	↕ ²	↕ ²
West Lothian College	↕ ²	↕ ²	↕	↕ ²	↕	●	●	↕ ²	↕ ²	↕ ²	↕ ²	↕ ²

How to read this table:

Same subject area applications
(e.g. FA Accounting to HNC Accounting)

- ↕ Direct entry with FA, no additional qualifications required
- ↕¹ Entry with FA plus unspecified qualifications (e.g. FA plus additional Higher and/or Nat 5s)
- ↕² Entry with FA plus specified qualifications (e.g. FA plus Higher English and/or Nat 5 Maths)

Different subject area applications
(e.g. FA Accounting to HNC Healthcare)

FA recognised as a Higher

- No HNC/D provision for this FA (e.g. FA will be recognised as a Higher)



Pupils with a FA in a subject area gain direct entrance onto a College course where indicated in this table.

FOUNDATION APPRENTICESHIP TO DEGREE OPPORTUNITY

How to read this table:

- ✓ The university offers a degree in this subject area
- ★ The university offers enhanced recognition if applying for a degree in the same subject area (e.g. FA Accountancy into Degree Accountancy)
- The university doesn't offer a degree in this subject area, FA recognised as a Higher towards other subjects (e.g. FA Accountancy into Degree Engineering)
- ✗ The university does not recognise FA frameworks in this subject area (FA in this subject area is not recognised as a Higher towards same/other subjects)



University	Recognition	Accounting	Business Skills	Civil Engineering	Engineering & Digital Media	Financial Services	Food & Drink Technologies	ICT Hardware	ICT Software	Scientific Technologies	Children & Young People	Healthcare
Abertay University	1 Higher A, ★ 2 Highers B	✓★	✓★	✓★	✓★	✓★	✓★	✓★	✓★	✓★	✓★	✓★
Edinburgh Napier University	1 Higher A	✓	✓	✓	✓	✓	✓	✓	✓	✓	✓	✓
Glasgow Caledonian University	1 Higher A	✓	✓	✓	✓	✓	✓	✓	✓	✓	✓	✓
Glasgow School of Art	1 Higher A	●	✓	✓	●	●	●	●	●	●	●	●
Heriot Watt University	1 Higher A	✓	✓	✓	✓	✓	✓	✓	✓	✓	✓	✓
Open University	Open Recognition	✓	✓	✓	✓	✓	✓	✓	✓	✓	✓	✓
Queen Margaret University Edinburgh	1 Higher A	✓	●	✓	✓	●	●	●	●	●	●	●
Robert Gordon University	1 Higher B, ★ 2 Highers B	✓★	✓★	✓★	✓★	✓★	✓★	✓★	✓★	✓★	✓★	✓★
Royal Conservatoire of Scotland	1 Higher A	●	●	●	●	●	●	●	●	●	●	●
Scotland's Rural College	1 Higher A	✓	●	✓	✓	●	●	●	●	●	●	●
University of Aberdeen ³	1 Higher B	✓	✓	✓	✓	●	●	●	●	●	●	●
University of Dundee ¹	1 Higher A	✓	✓	✓	✓	●	●	●	●	●	●	●
University of Edinburgh	1 Higher B	✗	✓	✗	✗	✗	✗	✗	✗	✗	✗	✗
University of Glasgow ²	1 Higher A	✓	✓	✓	✓	●	●	●	●	●	●	●
University of St Andrews ³	1 Higher A	✓	●	✓	✓	●	●	●	●	●	●	●
University of Strirling	1 Higher B	✓	●	✓	✓	●	●	●	●	●	●	●
University of Strathclyde ⁴	1 Higher B	✓	✓	✓	✓	●	●	●	●	●	●	●
University of Highlands and Islands ⁵	1 Higher A, ★ 2 Highers	✓★	✓★	✓★	✓★	✓★	✓★	✓★	✓★	✓★	✓★	✓★
University of the West of Scotland	1 Higher A	✓	✓	✓	✓	●	●	●	●	●	●	●

¹ Excludes Medicine and Dentistry ² Excludes Law, Medicine, Dentistry, Vet Medicine ³ Excludes Medicine ⁴ Excludes Law. If applying for Engineering, only FA in Civil or Engineering will be recognised ⁵ Enhanced recognition varies per framework, equivalent to 2 Highers for most frameworks

Pupils with a FA in a subject area gain direct entrance onto a Degree course where indicated in this table.

Courses with Partners - Edinburgh College Schools College Provision 2022/23 (Draft)

College - There are a fantastic range of pathways through college and the courses below can help get you started on your next steps after school. Check out the Progression Map from the college to see the options (<http://www.edinburghcollege.ac.uk/courses/schools>)

Please ensure you check the prospectus for entry requirements.

These courses take place on a Tuesday and Thursday afternoon. We structure the school timetable to make attending these courses as easy as possible. The school meets the travel costs for attending college but you will probably need to travel during your lunch break. ***Please note—some courses may not run if undersubscribed or if Covid restrictions remain in place.***

- MR—Milton Road Campus
- SH—Sighthill Campus
- GRN—Granton Road Campus

Curriculum Area	Course Title	SCQF Level	Course Outline	Entry Requirements	Attendance	Duration	Location
Art & Design	FA Creative & Digital Media with Graphic Design	6	S5 PUPILS ONLY Suitable for pupils capable of learning at SCQF Level 6 and interested in a career in Graphic Design.	Achieved or working towards National 5 Maths and National 5 English	Tuesday and Thursday afternoons	2 years	GC
Broadcast Media	Digital Media Editing NPA	5	SENIOR PHASE PUPILS This course will allow pupils to develop technical skills in the creation and editing of digital media but also recognise the importance of planning and design.	Selection Process applies: Applicants must submit a portfolio of practical artwork that demonstrates creative potential and mandatory attendance at college induction/transition activity.	Tuesday and Thursday afternoons	1 Year	SH
Broadcast Media	Film & Media NPA	6	S5 & 6 PUPILS The NPA in Film and Media will give pupils an insight into working in areas such as film, TV and the visual arts.	Interest in digital video and media industry. A short written task will be required in support of application	Tuesday and Thursday afternoons	1 Year	MR

Courses Available Through Partners - Edinburgh College Schools College Provision 2022/23

Broadcast Media	Foundation Apprenticeship Creative & Digital Media	6	S5 PUPILS ONLY Suitable for pupils going into S5 who are capable of learning at SCQF Level 6 and interested in a career in the Creative Industries, particularly in Television, Film Industry, Media and Audio Visual	Achieved or working towards National 5 Maths and National 5 English	Tuesday and Thursday afternoons	2 years	SH
Music & Sound Production	Modern Musicianship (Performance & Production) NPA Live Performance	6	S5 & S6 PUPILS Project-based based course involving working in a band or small group to plan, arrange, rehearse, record and perform a programme of music in a chosen style.	Applicants should be studying at Nat 5 or Higher level and must submit a short recording of themselves playing a piece on an instrument or singing (in any style).	Tuesday and Thursday afternoons	1 year	SH
Music & Sound Production	Sound Production Music Business NPA with Studio Recording NPA	6	S5 & S6 PUPILS This course will provide an introduction to working in the areas of music business and sound production.	Applicants should be studying at Higher level and will be required to complete a short written task in support of their application.	Tuesday and Thursday afternoons	1 Year	MR
Performing Arts	Acting & Performance NPA with Professional Theatre Preparation NPA (Two level 6 NPA Qualifications)	6	S5 & S6 PUPILS This course gives pupils the opportunity to study at college and gain a qualification and a range of experience in Acting and Performance and Theatre Preparation.	Ideally, pupils will be studying towards Higher English and will have achieved a pass (grade C or above) in National 5 English.	Tuesday and Thursday afternoons	1 Year	MR
Performing Arts	Costume NPA	5	S5 & S6 PUPILS This course will introduce pupils to techniques that are important in the costume design sector.	Interest in theatre/costume making. Applicants will require a portfolio and will be invited to attend an interview which will have a practical element	Tuesday and Thursday afternoons	1 Year	GR

Courses Available Through Partners - Edinburgh College Schools College Provision 2022/23

Performing Arts	Dance NPA	4&5	SENIOR PHASE PUPILS This is an introductory qualification in Dance in which pupils will explore choreography and gain an appreciation of dance skills and techniques.	Applicants must have an interest in dance and will be invited to attend for interview and participate in a dance class	Tuesday and Thursday afternoons	1 Year	GR
Performing Arts	Make-up Skills NPA	5	S5 & S6 PUPILS This course will provide candidates with skills in the key aspects of make-up.	Artistic flair and interest in make-up artistry within film, TV and Theatre context and fashion make-up career pathways.	Tuesday and Thursday afternoons	1 Year	GR
Performing Arts	NPA Technical Theatre	6	S5 & S6 PUPILS This course will introduce pupils to techniques that are important in Technical theatre.	Interest in theatre production. Applicants will require a portfolio.	Thursday afternoons	1 Year	GR
Computing	FA in Information Technology: Software Development	6	S5 PUPILS ONLY Suitable for pupils going into S5 who are capable of learning at SCQF Level 6 and interested in a Computing	You should be working towards achieving one or two Highers over S5 and S6, one of which has to be Computing	Tuesday and Thursday afternoons	2 years	SH
Photography	Photography Higher	6	S5 & 6 PUPILS This course includes the technical and creative aspects of photography.	National 5 Photography or three National 5 qualifications	Tuesday and Thursday afternoons	1 Year	SH
Photography	NPA Photography	5	SENIOR PHASE PUPILS This course will develop knowledge and understanding in practical photography.	Minimum 3 passes at SCQF Level 4	Tuesday and Thursday afternoons	1	Sighthill

Courses Available Through Partners - Edinburgh College Schools College Provision 2022/23

Built Environment	Design Engineer Construct (DEC) TQUK Level 1 Certificate 16 PLACES	5	S4 PUPILS Design Engineer Construct (DEC) is an accredited learning programme supported by industry leaders.	Two National 4s from English, Maths, Science	Tuesday and Thursday afternoons	1 Year	GR Campus
Built Environment	Design Engineer Construct (DEC) TQUK Level 2 Certificate 16 PLACES	6	S5 PUPILS Design Engineer Construct (DEC) is an accredited learning programme supported by industry leaders & professional bodies.	Design Engineer Construct level 1 and 2 National 5s from English, Maths, Science,	Tuesday and Thursday afternoons	1 Year	GR Campus
Built Environment	Electrical Skills - SQA Unit	4	SENIOR PHASE PUPILS This course provides the perfect platform for pupils who are interested in becoming an electrician.	Studying towards two National 4s from English, Maths, Science	Tuesday and Thursday afternoons	1 Year	GR Campus
Construction	Construction NPA	4&5	S4/5 PUPILS This course provides the opportunity to try a variety of trade disciplines.	Pupils will be required to attend a group information session and participate in a selection process.	Tuesday and Thursday afternoons	1 Year	GR Campus
Automotive	Institute of the Motor Industry (IMI) Paint & Body Repairs	4	SENIOR PHASE PUPILS Subjects include workshop health & safety, car body panel fitting, bodywork repair panel masking and paint application.	Pupils will be required to participate in a selection process	Tuesday and Thursday afternoons	1 Year	SH
Automotive	Institute of the Motor Industry (IMI) Automotive: Light Vehicle with EV Technology	4	SENIOR PHASE PUPILS This course offers a practical approach to learning. Subjects include workshop health & safety, car body panel fitting, car service and safety inspections, brake pads and disc fitting.	Pupils will be required to participate in a selection process	Tuesday and Thursday afternoons	1 Year	Midlothian Campus/ SH

Courses Available Through Partners - Edinburgh College Schools College Provision 2022/23

Early Years & Childhood Practice	SCP Childhood Practice Level 4 SCP Childhood Practice Level 5	4&5	SENIOR PHASE PUPILS Provides an excellent introduction to further study in this exciting and fast growing Sector.	There are limited spaces available on these courses. Selection will be based on personal statement and pre-induction activity.	Tuesday and Thursday afternoons	1 year	GR & Sighthill Campus
Early Years & Childhood Practice	Introduction to Early Years & Primary Teaching - SQA Units	6	S5 & S6 PUPILS To support students to develop the skills and understanding to progress on to study the HNC in Childhood Practice or Primary School teaching.	Applicants must either have achieved or be working towards Higher English.	Tuesday and Thursday afternoons	1 year	Online
Health Professions & Social Care	Health & Social Care Academy	5	SENIOR PHASE PUPILS Provides an agile pathway to a career in Health Care Professions.	Four National 4's (including English) and a genuine interest in working in/studying Health Care or Social Care.	Tuesday and Thursday afternoons	1 year	Sighthill & MR
Health Professions & Social Care	Skills for Work Health & Social Care (Higher)	6	S5 & S6 PUPILS Introduces pupils to the nature of health and social care work.	Health and Social Care National 5 or four National 5's (including English)	Tuesday and Thursday afternoons	1 year	SH
Health Professions & Social Services	FA Social Services and Health Care	6	S5 PUPILS ONLY Suitable for pupils going into S5 who are capable of learning at SCQF Level 6 and interested in working within the care sector, primarily within Social Care.	Achieved or working towards National 5 Maths and National 5 English	Tuesday and Thursday afternoons	2 years	SH
Social Sciences and Integrated Curriculum Services	Intro to Social Science	4	S4 & S5 PUPILS This course will introduce students to the social sciences.	National 4 English	Tuesday and Thursday afternoons	1 year	SH
Social Sciences and Integrated Curriculum Services	Psychology Higher	6	S6 PUPILS ONLY Studying Psychology will enable pupils to develop an understanding of the study of the human mind and behaviour.	Applicants need to have gained Higher English and another relevant subject at Higher level e.g. History, Modern Studies, Biology	Tuesday and Thursday afternoons	1 year	SH

Courses Available Through Partners - Edinburgh College Schools College Provision 2022/23

Access & Continuing Education	Introduction to College - EC Units	3-4	SENIOR PHASE PUPILS For pupils thinking about coming to college after they leave school and who have a barrier to learning or receive learning support at school	No formal qualifications required.	Tuesday and Thursday afternoons	18 weeks	SH, GR, MR & Midlothian Campus
Access & Continuing Education	Introduction to College - EC Units	1-2	Aimed at pupils who attend special education, or receive significant levels of support in a mainstream school	No formal qualifications required.	Tuesday and Thursday mornings	18 weeks	Milton Road or SH
Enterprise & Commerce	FA Accounting	6	S5 PUPILS ONLY Suitable for pupils going into S5 who are capable of learning at SCQF Level 6	Achieved or working towards National 5 Maths and National 5 English	Tuesday and Thursday afternoons	2 years	SH
Enterprise & Commerce	FA Business	6	S5 PUPILS ONLY For those capable of learning at SCQF Level 6 and interested in a career in Business and Administration.	Achieved or working towards National 5 Maths and National 5 English	Tuesday and Thursday afternoons	2 years	SH
Enterprise & Commerce	FA Financial Services	6	S5 PUPILS ONLY For pupils going into S5 who are capable of learning at SCQF Level 6 and interested in a career in Business and Administration.	Achieved or working towards National 5 Maths and National 5 English	Tuesday and Thursday afternoons	2 years	SH
Enterprise & Commerce	Uniformed & Emergency Services	4	S4 PUPILS Enable pupils to develop practical skills, required for work in uniformed and emergency services.	No formal entry requirements but pupils required to complete a personal statement	Tuesday and Thursday afternoons	1 year	SH

Courses Available Through Partners - Edinburgh College Schools College Provision 2022/23

Enterprise & Commerce	NPA legal Services with Police Studies	6	S4 PUPILS This course will provide pupils with an introduction to the Scottish Legal System.	Working towards National 5 qualifications	Tuesday and Thursday afternoons	1 year	SH
Enterprise & Commerce	HNC Police Studies 2-year course	7	S5 PUPILS This is a 2-year course for pupils who are interested in developing a career where knowledge of the Police Service and Policing is important.	One Higher in a relevant subject and four National Units at SCQF level 5/6	Tuesday and Thursday afternoons	2 years	SH
Enterprise & Commerce	NPA Criminology	6	S5 PUPILS (NPA) allows pupils to study criminology.	Entry is at the discretion of the college. However, it would be beneficial if pupils had achieved: • relevant qualifications at SCQF level 5	Tuesday and Thursday afternoons	1 year	SH
Enterprise & Commerce	PDA Criminology	7	S5 & S6 PUPILS Covers the following: theories of crime causation and criminalisation, aspects of the criminal justice system in Scotland.	Working towards two relevant Highers and 5 National Qualification Units at SCQF level 5/6 or a minimum of 6 National 5 passes at B or above.	Open Learning only	1 Year	Open Learning
Enterprise & Commerce	Marketing with Entrepreneurial Skills	6	S5 & S6 PUPILS Provides learners with a vocationally relevant introduction to Marketing and Entrepreneurial Skills	Relevant qualifications at SCQF level 5 along with a personal statement.	Tuesday and Thursday Afternoons	1year	SH
Enterprise & Commerce	Access to Enterprise & Commerce	5	S4 PUPILS Provides an introduction to functions central to the business environment.	Applicants should be working towards National 4s, preferably in Maths and English.	Tuesday & Thursday Afternoons	1 Year	Milton Road

Courses Available Through Partners - Edinburgh College Schools College Provision 2022/23

Hair & Beauty	VTCT Level 1 Skills (VRQ) (SCQF Level 4) progression to Level 2 in Hair & Beauty Skills (Semester 2) (SCQF Level 5)	4/5	S4 & 5 Pupils Provides an introduction to a variety of skills required for the Hairdressing and Beauty industry.	Pupils must be in S4 and S5 and have a true passion for the industry. Applicants will be required to participate in a selection process.	Tuesday and Thursday afternoons	1 year	GR Campus & MR
Professional Cookery, Hospitality, Retail & Events	NPA in Hospitality	5 & 6	S5 & S6 PUPILS Provides pupils with the knowledge and skills required for a career within the Hospitality industry.	Must have an interest in Hospitality Industry. Four relevant National 4s are required.	Tuesday and Thursday afternoons	1 year	MR
Professional Cookery, Hospitality, Retail & Events	Professional Cookery NPA	3	SENIOR PHASE PUPILS Introduces pupils to techniques that are important in professional cookery.	There are no formal entry requirements for this course but pupils should show a keen interest in food and cooking	Tuesday and Thursday afternoons	1 year	GR Campus or MR
Professional Cookery, Hospitality, Retail & Events	Introduction to Events Co-ordination	5	SENIOR PHASE PUPILS Develop the skills which will enable pupils to start their journey in the exciting and evolving world of events.	Applicants will be required to attend a course information event.	Tuesday and Thursday afternoons	1 year	Milton Road & SH
Professional Cookery, Hospitality, Retail & Events	Skills for Work - Retailing National 5	5	SENIOR PHASE PUPILS Designed to provide an introductory qualification in retail	Four National 4s in relevant subject areas along with a completed personal statement.	Tuesday and Thursday afternoons	1 year	SH
Travel & Tourism	NPA Travel & Tourism (The Business of Tourism)	6	S5 & S6 PUPILS Will gain important skills and knowledge required for work in the travel agency, visitor attraction, as a tour guide or wider travel and tourism industry.	Candidates must have achieved 4 National 5 qualifications at grade C or above	Tuesday and Thursday afternoons	1 year	SH
Travel & Tourism	NPA Travel & Tourism (The Business of Travel)	6	S5 & S6 pupils Gain important skills and knowledge required for work in a travel agency, as air cabin crew, resort representative or wider travel and tourism industry.	Candidates must have achieved 4 National 5 qualifications at grade C or above	Tuesday and Thursday afternoons	1 year	GR Campus

World of Work Today

Edinburgh, Midlothian and East Lothian



Tourism, Hospitality, Distribution and Retail



Finance, Business and Admin Services



Health and Social Care



Science and Technology



Other Opportunities



Education



Creative Industries



Construction



Total Jobs:
384,605

DYW | EDINBURGH, MIDLOTHIAN & EAST LOTHIAN
Developing the Young Workforce
#InformedInspiredHired

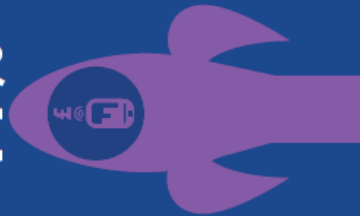
39%



Total
Job Openings
89,600

Tourism, Hospitality,
Distribution and Retail

14%



Total
Job Openings
32,900

Finance, Business
and Admin Services

12%



Total
Job Openings
27,400

Health and
Social Care

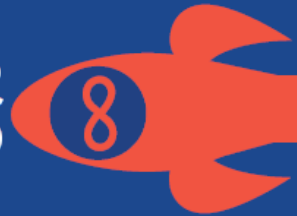
9%



Total
Job Openings
21,500

Education

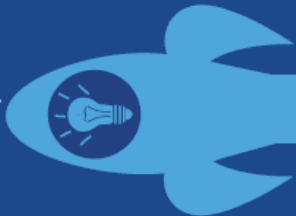
8%



Total
Job Openings
18,200

Other
Opportunities

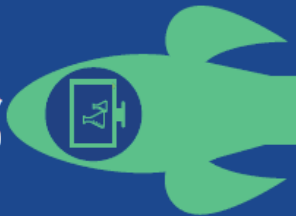
7%



Total
Job Openings
15,800

Creative
Industries

6%



Total
Job Openings
14,400

Science and
Technology

4%



Total
Job Openings
9,900

Construction

Jobs Of The Future

Between 2017 – 2027 there will be 229,700 job openings in Edinburgh, Midlothian and East Lothian

DYW | EDINBURGH, MIDLOTHIAN & EAST LOTHIAN
Developing the Young Workforce

#InformedInspiredHired

It is anticipated that digital technology will permeate all forms of work

81.5% of job openings will be replacement demand while 18.5% are due to business growth

This data indicates where new jobs will be created in each area of industry between 2017 and 2027.

Employment by Qualification Scotland 2014 - 2024

SCQF 11-12 Masters Degrees, Postgraduate Diplomas, Doctorates, Professional Development Awards 11 - 12, Professional Apprenticeships	SCQF 7-10 Advanced Highers, Higher National Certificates and Diplomas, Honours and Ordinary Degrees, Professional Development Award Level 7 - 10, Graduate Apprenticeship, Modern Apprenticeship Level 3.	SCQF 6 Highers, National Certificates level 6, Modern Apprenticeship level 3, Foundation Apprenticeships, Skills for Work Higher, National Progression Award Level 6	SCQF 5 National 5, National Certificates level 5, Modern Apprenticeship level 2, National Progression Awards Level 5	SCQF 4 National 4, National Certificates level 4, National Progression Awards Level 4
---	--	--	--	--

Tourism, Hospitality, Distribution and Retail



Business, Finance and Admin Services



Health and Social Care



Science and Technology



Other Opportunities



Education



Creative Industries



Construction



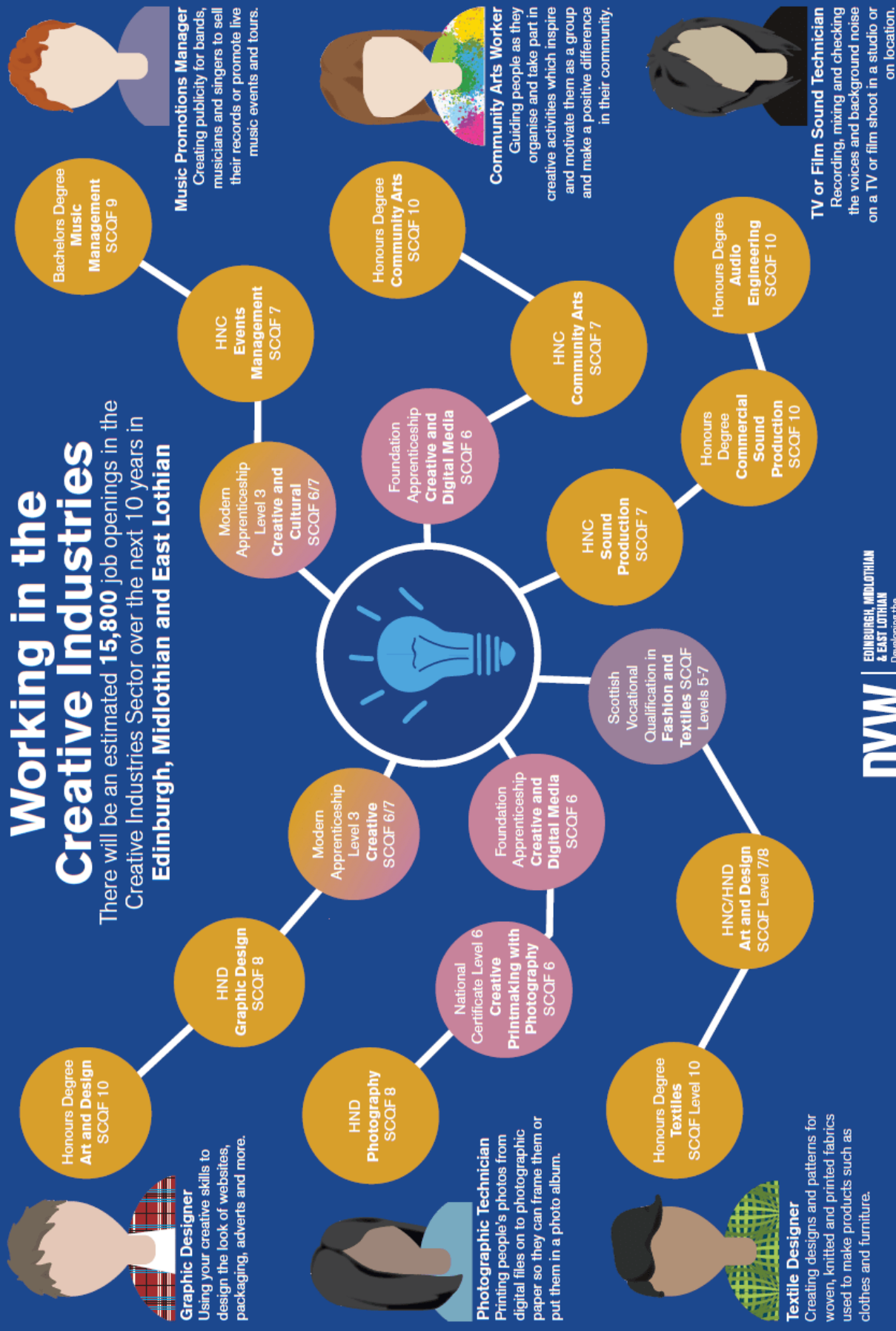
DYW
 EDINBURGH, MIDLOTHIAN
 & EAST LOTHIAN
 Developing the
 Young Workforce

#InformedInspiredHired

This data represents the percentage of jobs within a sector which will require these qualifications. E.G - Tourism will expect 9% of workers to have an SCQF 4 qualification.

Working in the Creative Industries

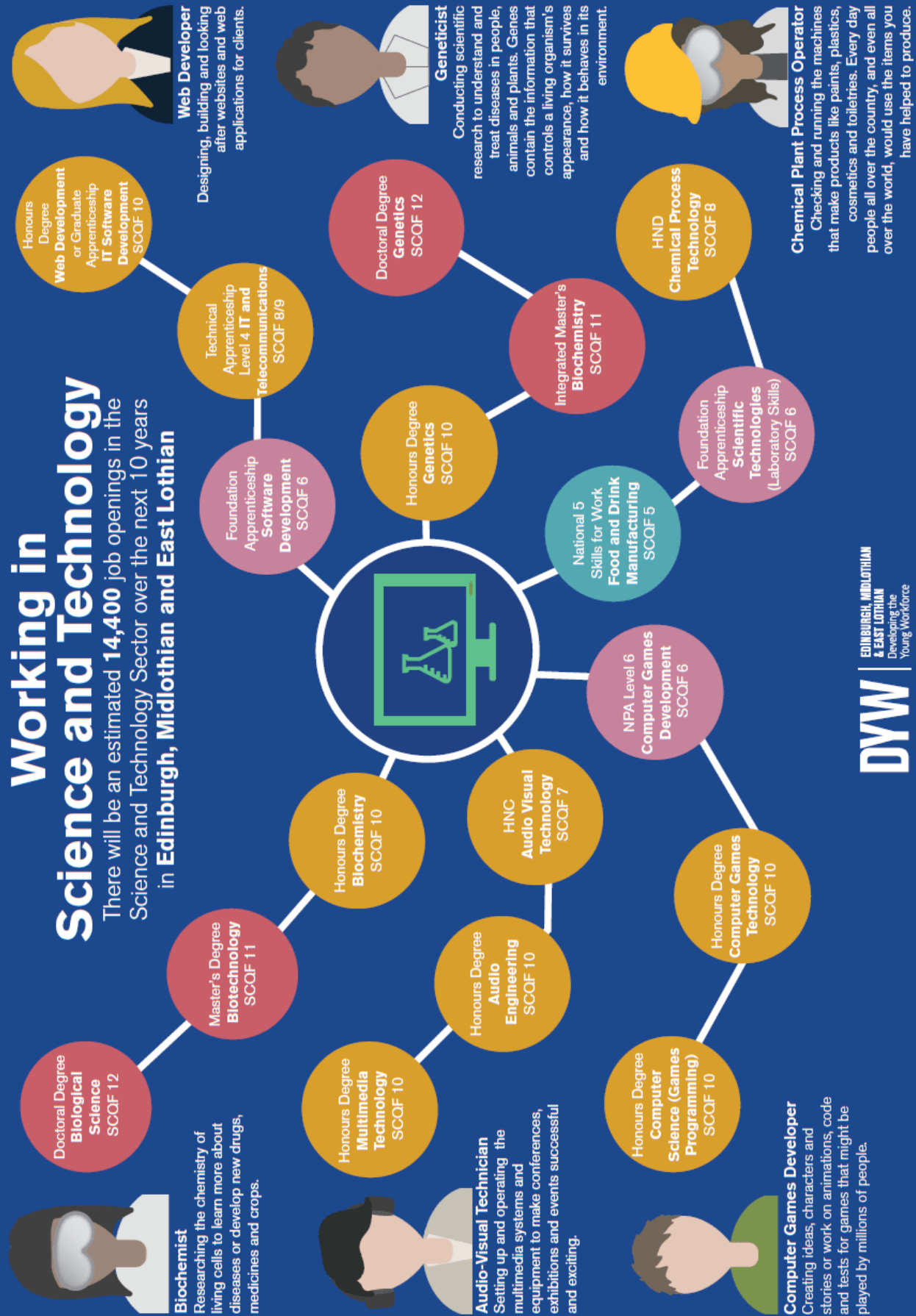
There will be an estimated **15,800** job openings in the Creative Industries Sector over the next 10 years in **Edinburgh, Midlothian and East Lothian**



DYW | EDINBURGH, MIDLOTHIAN & EAST LOTHIAN
Developing the Young Workforce
#InformedInspiredHired

Working in Science and Technology

There will be an estimated **14,400** job openings in the Science and Technology Sector over the next 10 years in **Edinburgh, Midlothian and East Lothian**

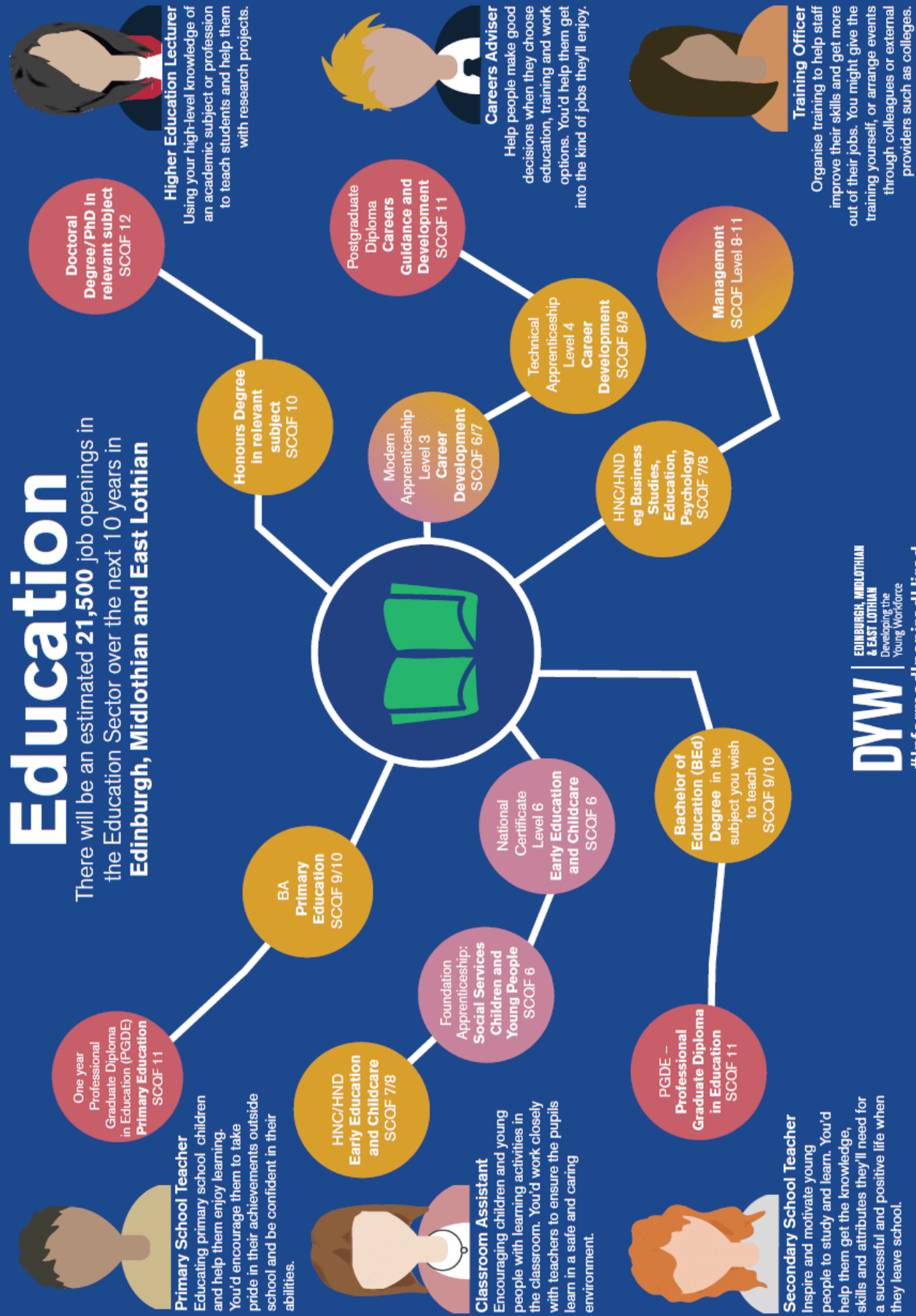


DYW | EDINBURGH, MIDLOTHIAN & EAST LOTHIAN
Developing the Young Workforce
#InformedInspiredHired

Science & Technology opportunities expected and qualifications required in Edinburgh, Midlothian & East Lothian over the next 10 years.

Education

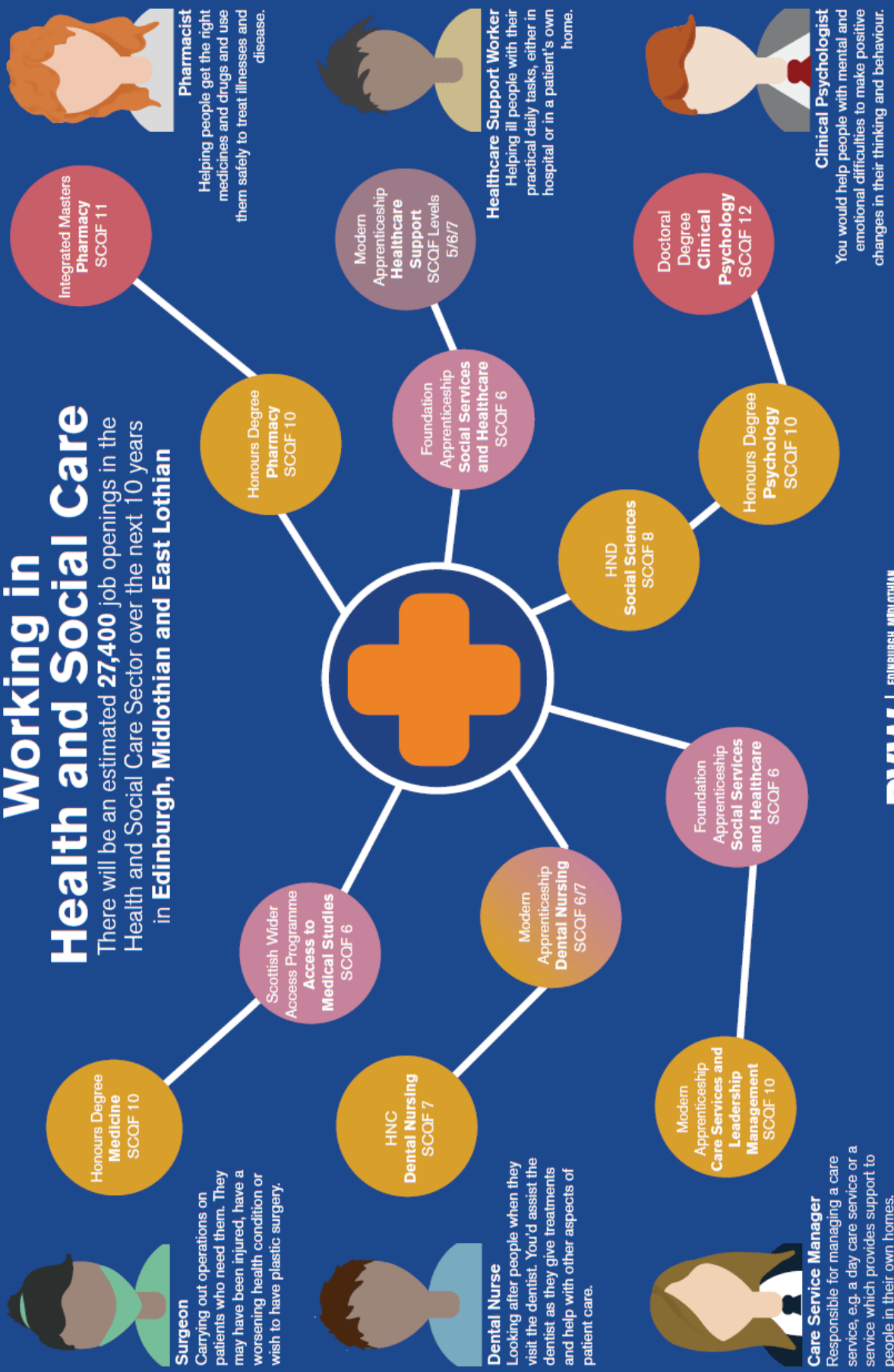
There will be an estimated **21,500** job openings in the Education Sector over the next 10 years in **Edinburgh, Midlothian and East Lothian**



DYW | EDINBURGH, MIDLOTHIAN & EAST LOTHIAN
Developing the Young Workforce
#InformedInspiredHired

Working in Health and Social Care

There will be an estimated **27,400** job openings in the Health and Social Care Sector over the next 10 years in **Edinburgh, Midlothian and East Lothian**



Surgeon
Carrying out operations on patients who need them. They may have been injured, have a worsening health condition or wish to have plastic surgery.

Dental Nurse
Looking after people when they visit the dentist. You'd assist the dentist as they give treatments and help with other aspects of patient care.

Care Service Manager
Responsible for managing a care service, e.g. a day care service or a service which provides support to people in their own homes.

Pharmacist
Helping people get the right medicines and drugs and use them safely to treat illnesses and disease.

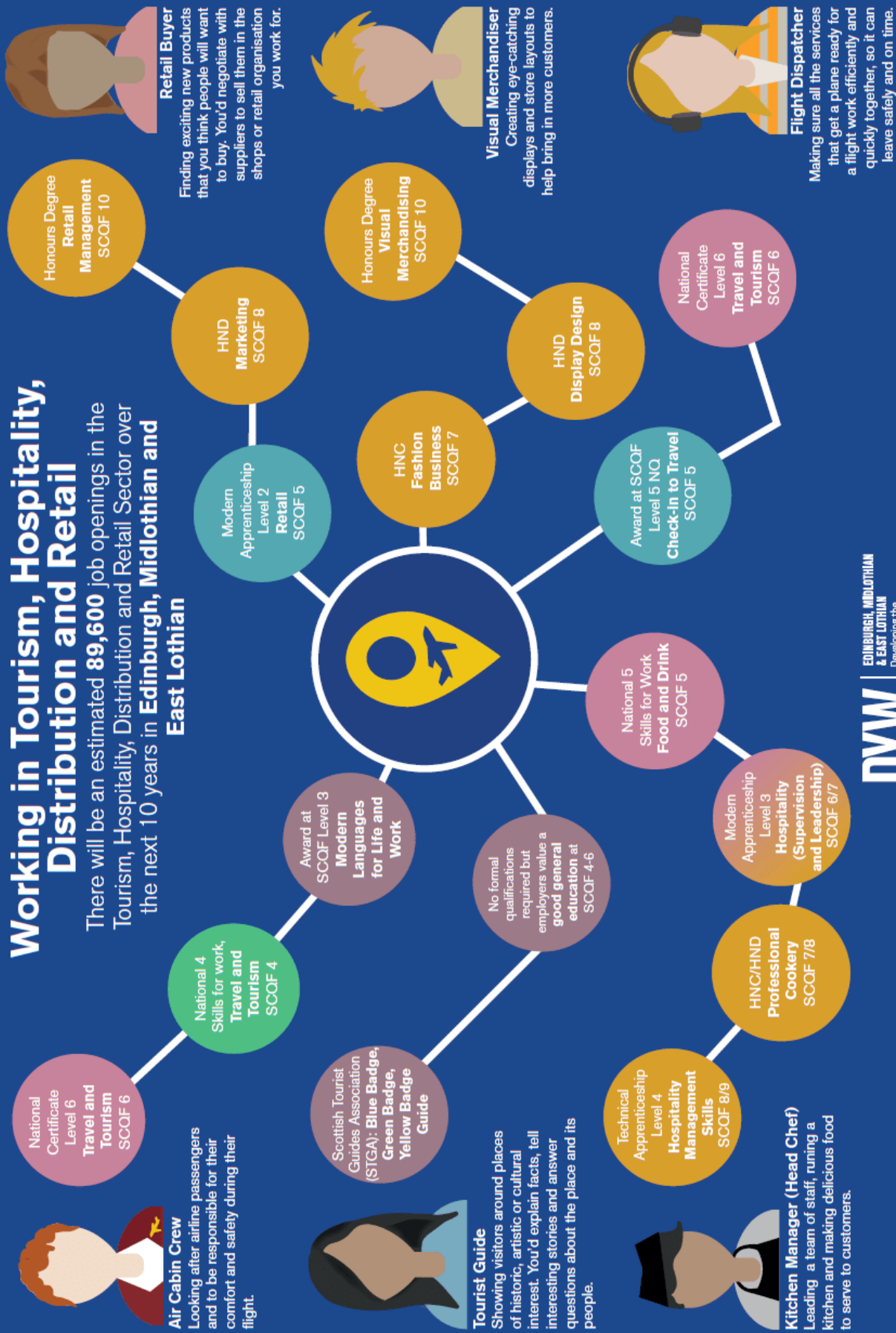
Healthcare Support Worker
Helping ill people with their practical daily tasks, either in hospital or in a patient's own home.

Clinical Psychologist
You would help people with mental and emotional difficulties to make positive changes in their thinking and behaviour.

DYW | EDINBURGH, MIDLOTHIAN & EAST LOTHIAN
Developing the Young Workforce
#InformedInspiredHired

Working in Tourism, Hospitality, Distribution and Retail

There will be an estimated **89,600** job openings in the Tourism, Hospitality, Distribution and Retail Sector over the next 10 years in **Edinburgh, Midlothian and East Lothian**



DYW | EDINBURGH, MIDLOTHIAN & EAST LOTHIAN
Developing the Young Workforce
#InformedInspiredHired

Tourism, Hospitality, Distribution & Retail opportunities expected and qualifications required in Edinburgh, Midlothian & East Lothian over the next 10 years.

ART & DESIGN *National 3/4/5*



Entry Requirements

In S4 students will be presented at National 3, 4 or 5. These levels will be decided by the Art and Design department and will be based on assessment of the folio and integrated critical studies. We will also look at CFE levels achieved in S3.

In S5/6 students can be presented at Nat 3, 4, 5, Higher, Advanced Higher.

Entry requirements:

- National 3 - National 3 in English
- National 4 - National 4 in English
- National 5 - National 5 in English

Course Description

Students undertake a one-year course consisting of a Design Portfolio with integrated design critical studies and an Expressive Portfolio with integrated expressive critical studies. Portfolios for both Expressive and Design consists of 5 elements.

- Initial research and investigation
- Development of ideas
- Final outcome
- Art studies
- Evaluation of own work and other artist's and designer's work throughout the entire course.

At National 5 Students sit a written exam based on their knowledge of artists and designers.

With each increase of qualification level, the quality and level of sophistication in worked produced moves up.

Assessment

Deadlines for submission of work are issued at the beginning of the course

National 3

- A portfolio is produced and this level of study is assessed by the Art and Design department
- Students will produce internally marked Art studies written work.

National 4

- A portfolio is produced and this level of study is assessed by the Art and Design department
- Students will produce internally marked Art studies written work.

National 5

- A portfolio is produced and this is externally marked by the SQA.
- Students will sit an externally marked Art studies exam.

Home Study Expectations

Homework based on both practical and critical work will feature in this course. Students will also be encouraged to attend the study clubs offered by the Art and Design department after school.

Possible next level of study

National 5 - Higher Art and Design

ART & DESIGN Higher



Entry Requirements: Students considering this course should have gained a pass at National 5.

Course Description: This course aims to develop personal creativity through the use of problem solving, and critical thinking. The course includes 3 main components. A practical Expressive Unit, a practical Design unit and an Art and Design Studies written component and exam. Students will also reflect throughout the course on how artists' and designers' work has influenced their own practice.

Mandatory Units - This course comprises of 3 mandatory units:

- Expressive unit – Students negotiate a theme for their investigation, refine their ideas through experimental development and create a final painting.
- Design unit – Students negotiate a theme for their investigation, refine their ideas through experimental development and create a final piece of graphic design or jewellery.
- Art and Design Studies – The aim of this part of the course is to develop the students' analytical and critical skills. Students study the development of Still Life/Figurative painting/Graphic Design/Jewellery. This element of the course also explores the impact of cultural/social/ and historical factors on the work of artists and designers.

Assessment

Both practical units are mounted and presented as a portfolio for assessment and sent to the SQA in April. The Practical Portfolio is worth **200 marks**. Art and Design Studies forms part of the coursework as well as being assessed in a written exam. The written exam is worth **60 marks**.

Home Study Expectations

A high level of self-motivation is required for the Art and Design Higher. Students can expect to do at least 1.5 hours of homework per week. Staff will have regular reviews with students to establish next steps. The Department offers 1 hour of study support each week to aid this. Over the course of the year this can involve:

- Collecting and drawing an appropriate range of objects
- Researching and writing essays on the work of artists and designers
- Using Study Skills strategies to prepare for class tests and the exam.
- Completing any unfinished practical tasks initiated in class time

Possible next level of study - Advanced Higher Art and Design.

Possible Career Paths There are a varied and wide-ranging number of career paths that success in Art and Design can lead to including – fashion design, fine art, games design, illustration, animation, architecture, art history, curating, printmaking, product design, graphics, interior design, textile design, art therapy, teaching, hairdressing, hair and beauty, stage - set design etc.

ART & DESIGN - Advanced Higher



Entry Requirements: Students must have achieved a Pass at Higher. This course is suitable for students wishing to pursue a creative pathway after school either at HNC/HND or Degree level.

Course Description: The development of creative potential is the main focus for this practical and experiential course. Students negotiate either a Design brief or Expressive outline with their teacher and pursue a course of research, development and final outcomes. The focus is on sustained self-directed learning. Students also develop higher-order critical skills through the study of artists' and designers work in relation to their own practice.

Mandatory Units: Students must complete one Practical Unit (either Design/Expressive) including an evaluation and one Critical Analysis Unit.

- **Practical Unit:** This includes a clear outline and focus for the project, thorough research and the development of a single line of enquiry showing depth and wide-ranging exploration. This should then be concluded with a high quality final outcome/outcomes. **Written evaluation:** A written evaluation of the project is then completed by the student.
- **Critical Analysis:** An in-depth critical analysis of a chosen artist or designers work which is related to a subject that has informed their portfolio.

Assessment

A practical portfolio of work containing around 11 A1 sheets of work and sketchbooks is presented to the SQA for assessment at the end of the course. Worth **60 marks**. A written evaluation of the project up to 300 words is submitted to accompany this. Worth **10 marks**. The Critical Analysis of up to 2000 words is worth **30 marks** and is also sent with the folio for marking.

Home Study Expectations: High levels of self-motivation and time management are expected from AH students as the AH is often run in parallel with portfolio applications for University/College. Students are also offered the opportunity to attend the ACES Programme at ECA on Friday afternoons. Students agree regular weekly targets with staff and pursue high levels of independent study. Study support is also offered for one hour each week as well as at agreed times with staff.

Possible next level of study - HNC/HND/BA(Hons) course in Fine Art or Design disciplines.

Possible career paths: Depending on the courses selected at college or university students may pursue careers pathways in fashion design, fine art, games design, illustration, animation, architecture, art history, curating, printmaking, sculpture, multi-media, product design, graphics, interior design, textile design, art therapy, teaching, lecturing, journalism, stage-set design etc.

Creative Thinking Award - Level 5 &6

Course Outline

This is a new course which celebrates the importance of creativity, problem-solving and critical thinking. Essential skills that will be required of a future workforce. It is the result of a collaboration between employers, creative agencies, teachers, lecturers and students who came together as a group to form **Daydream Believers**. This award-winning collaborative effort has resulted in a website daydreambelievers.co.uk and includes resources by contributors such as LEGO, Whitespace, Amazerealise, Skyscanner, D&AD, Napier University, Edinburgh College and many more.

Course content

The course centres around 5 key outcomes:

- **Research, Concepts, Fail and Fix, Communicating ideas and Critical thinking**

Students will work on 4 projects all of which will be resourced from the Daydream Believers website. Examples of projects include:

- **Thoughts become things** – Creative Studio Acrylicize set you the challenge of enhancing the space inside a Hospital, Music venue, School or workplace for its' users.
- **Campaign for kindness**- Studio LR asks students to create an advertising campaign using empathy.
- **Circular Brand** – The Ellen MacArthur Foundation challenges students to create a fashion brand which moves away from the take, make, waste economy to a model that has wider benefits to society.
- **Van of Dreams**- Your community has been gifted a campervan. How can you use it to create a product, service or experience for a specific user group?

Work will be assessed using the “Stamp It” tool and APP. The course is validated by Napier University and teachers will moderate the work through Edinburgh College.

Recommended entry

All students entering the course should be studying the equivalent level in English. eg Level 5 students should be studying National 5 English, Level 6 students should be studying Higher English. This is required to support the critical thinking element of the course.

Homework

Students will be expected to work independently for many aspects of the course and will be highly self-motivated. Independent research and concept development will not only take place in the classroom.

Progression

Level 5 & 6 Awards are worth 24 SCQF points.

Students will be able to progress to a Level 6 Award.

Drama National 3

Entry Requirements

Learners are expected to have achieved BGE (S1-3) Drama at level 2.

Mandatory Units

There are 2 mandatory units:

- Basic Drama Skills – learners will work together to devise, present and evaluate a piece of drama based on a stimulus.
- Basic Production Skills - learners will explore and use Production skills to enhance performances using Lighting, Costume, Sound, Set Design and Props.

Assessment

Learners will be assessed on a pass/fail basis based on evidence gathered throughout the Units. Units are internally assessed via the production of evidence such as booklets, observation checklists, logbooks for reflection/evaluation and recordings of presentations. External verification of quality and standards across schools will be carried out by the SQA in collaboration with individual teachers.

Home Study Expectations

Students can expect to be doing at least 20 minutes of homework each week which will include the following:

- Research
- Sourcing Props and Costume for Production Skills • Rehearsals after school
- Completion of booklet (written work)

Possible Next Level of Study

This course may enable progress to:

- National 4 Drama Course
- National 4 Drama Units

Possible Career Paths

Jobs directly linked with Drama:

Actor, Sound/Lighting Technician, Scenographer, Make Up Artist, Costume Designer, Stage Manager, Arts Administrator, Drama Teacher, Drama Therapist, Television Production Assistant, Radio Presenter, Theatre Director

Jobs where Drama would be useful:

Nursery Assistant, Youth & Community Worker, Personnel Manager, Social Worker, Journalist, Marketing Manager, Charities Administrator, Lawyer/Solicitor, Politician

Drama National 4

Entry Requirements

Learners are expected to have completed BGE (S1-3) Drama at level 3.

Mandatory Units

- Drama Skills – learners will work together to devise, present and evaluate a piece of drama based on a stimulus.
- Production Skills - learners will explore and use Production skills to enhance performances using Lighting, Costume, Sound, Set Design and Props.

Assessment

Two mandatory Unit Assessments plus an 'Added Value' will be examined. All assessment will take place at school (internally) - there is no external examination at National 4.

Home Study Expectations

Students can expect to be doing around 1 hour of homework per week which will include the following:

Research

- Sourcing Props and Costume for Production Skills
- Rehearsals after school
- Completion of booklet (written work)

Possible Next Level of Study

This course may enable progress to:

- National 5 Drama Course
- National 5 Drama Units

Possible Career Paths

Jobs directly linked with Drama:

Actor, Sound/Lighting Technician, Scenographer, Make Up Artist, Costume Designer, Stage Manager, Arts Administrator, Drama Teacher, Drama Therapist, Television Production Assistant, Radio Presenter, Theatre Director

Jobs where Drama would be useful:

Nursery Assistant, Youth & Community Worker, Personnel Manager, Social Worker, Journalist, Marketing Manager, Charities Administrator, Lawyer/Solicitor, Politician

Drama National 5

Entry requirements

Learners are expected to have completed BGE (S1-3) Drama at level 4.

Mandatory Units

- Unit 1: Drama Skills (Unit Assessment) - learners will work individually to create, present and evaluate a piece of drama based on a stimulus.
- Unit 2: Production Skills (Unit Assessment) - learners will explore and use Production skills such as Lighting, Costume, Sound, Set Design and Props to enhance performances.

Home Study Expectations

- Learners can expect at least 1 hour of homework per week which will include the following:
- Research
- Sourcing Props and Costume for Production Skills
- Rehearsals after school
- Completion of booklet (written/theory work)
- Learning lines

Possible Next Level of Study

This course may enable progress to:

- Higher Drama Course
- Higher Drama Units

Possible Career Paths

Jobs directly linked with Drama:

Actor, Sound/Lighting Technician, Scenographer, Make Up Artist, Costume Designer, Stage Manager, Arts Administrator, Drama Teacher, Drama Therapist, Television Production Assistant, Radio Presenter, Theatre Director

Jobs where Drama would be useful:

Nursery Assistant, Youth & Community Worker, Personnel Manager, Social Worker, Journalist, Marketing Manager, Charities Administrator, Lawyer/Solicitor, Politician

Drama Higher

Entry Requirements

Learners are expected to have an A-C National 5 Drama

Mandatory Units

- Unit 1: Drama Skills (Unit Assessment) - learners will work together and individually to create, present and evaluate pieces of drama based on a range of stimuli.
- Unit 2: Production Skills (Unit Assessment) - learners will explore and use 2 Production skills such as Lighting, Costume, Sound, Set Design and Props to enhance performances.

Course Assessment

Unit 3: Course Assessment: Performance Assessment – 60%

Section 1: Final Performance – 50 marks (Practical Exam)

Section 2: Preparation for Performance – 10 marks (Written Task)

Question Paper – 40%

Section 1: Theatre Production: Text in context—20 marks (Essay)

Section 2: Theatre Production: Application—10 marks

Section 3: Performance Analysis—20 marks (Essay)

Home Study Expectations

Learners can expect around 2 hours of homework per week which will include the following:

- Research
- Sourcing Props and Costume for Production Skills
- Rehearsals after school
- Completion of booklet and essays
- Learning lines

Possible Next Level of Study

This course may enable progress to:

- Advanced Higher Drama Course
- Advanced Higher Drama Units

Possible Career Paths

Jobs directly linked with Drama:

Actor, Sound/Lighting Technician, Scenographer, Make Up Artist, Costume Designer, Stage Manager, Arts Administrator, Drama Teacher, Drama Therapist, Television Production Assistant, Radio Presenter, Theatre Director

Jobs where Drama would be useful:

Nursery Assistant, Youth & Community Worker, Personnel Manager, Social Worker, Journalist, Marketing Manager, Charities Administrator, Lawyer/Solicitor, Politician

Music - National 3/4/5

Entry Requirements

Students should be able to perform music on 2 instruments. ABRSM Grade 1 is equivalent to National 3, Grade 2 to National 4 and Grade 3 to National 5.

Course Description

Music develops learners' performing skills and provides opportunities for learners to create music covering many musical techniques and genres. At N3/4/5 level students are required to learn 2 instruments (or 1 instrument and voice). They will explore a wide range of styles from Scottish Music to Classical and Pop and Rap. This will influence the composing element where pupils will complete a series of short projects.

Mandatory units There are 3 mandatory units for N3 and N4

National 3 & 4 – There are three distinct units that pupils must pass to gain an overall award:

- Performing Skills
- Composing Skills
- Understanding Music Skills

National 5 - There are no mandatory unit but there are freestanding units that pupils can complete if unable to complete the full award:

- Performing Skills
- Composing Skills
- Understanding Music Skills

Assessment

National 3 - students will be required to pass all three units which are internally assessed.

National 4 - students will be required to pass all three units and the final course assessment which will consist of a final Performing Added Value Unit, where students will perform their program and reflect on their progress. This is assessed internally.

National 5 - students will be required to complete the course assessment which will consist of three components:

- Music Performing 50% of overall grade
- Understanding Music (Listening) 35% of overall grade
- Composition folio 15% of overall grade

Home Study Expectations - Students can expect to be doing daily instrumental practice at home or in school 10/15 minutes' minimum on both instruments. They will have regular Understanding music homework and will be expected to revise for class test and course assessment.

Possible next level of study - Higher Music

Possible career Paths - A wide range of opportunities within the creative industries and beyond such as; Musician, Music Therapist, Journalist, Stage Manager, Producer, DJ, Presenter, Primary/Secondary Teacher, Sound Technician and Public Relations.

Music - Higher

Entry requirements:

Students considering this course should have gained an A, B or C pass at National 5. It is recommended that pupils with a National 5 D award progress to a National 5 course within the same curricular area rather than progress to Higher in this subject.

If you do not have a National 5 award at A-C in this subject then discussion and approval from the Faculty CL is needed before entry into Higher can be confirmed.

Course Description

In Higher Music students will develop their skills further in their chosen 2 instruments ABRSM Grade 4 (or 1 instrument and voice). They will explore further and, in more detail, different Historical Periods of Music with greater depth and understanding. They will develop further compositional skills and complete a composition folio.

Mandatory units There are no mandatory units but the following can be offered as freestanding units:

- Performing Skills
- Composing Skills
- Understanding Music Skills

Assessment

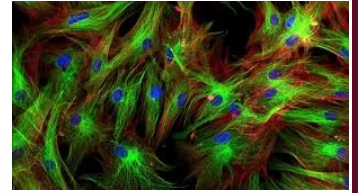
- Higher students will be required to complete the course assessment which will consist of three components: Music Performing 50% of overall grade
- Understanding Music (Listening) 35% of overall grade
- Composition folio 15% of overall grade

Home Study Expectations Students can expect to be doing daily instrumental practice at home or in school 15 minutes' minimum on both instruments. They will have regular Understanding music homework and will be expected to revise for class test and course assessment.

Possible next level of study Advanced Higher Music

Possible career paths Future possible career paths include a wide range of opportunities within the creative industries and beyond such as; Musician, Music Therapist, Journalist, Stage Manager, Producer, DJ, Presenter, Primary and Secondary Teacher, Sound Technician and Public Relations.

Biology - National 3/4/5



Course Description

The National Biology courses cover major areas of biology including cellular, whole organism and ecosystems. The key areas of biodiversity, interdependence, body systems and cells and inheritance are developed through the course. The National Qualifications will build on knowledge and skills gained in S3 and will provide opportunity to develop research, analysis and practical skills.

Mandatory Units

There are 3 mandatory units:

- Cell Biology
- Multicellular Biology
- Life on Earth

Assessment

Each unit will be assessed internally and students must pass each unit to achieve a course award at National 3 and 4. These units are rigorously internally assessed and are verified by the SQA.

At National 3 and 4 there is an added value unit (research activity) and an assessed practical with report write up.

At National 5, assessment of the course will comprise internally set topic and unit tests as well as a final exam set by the SQA. In addition, students are required to complete an assignment that involves practical aspects, research and analysis.

Home Study Expectations

Students can expect to be doing at least 1 hour of homework per week which will include the following:

- Past paper questions
- Practical report writing
- Research tasks with data handling
- Problem solving activities
- Revision for topic and unit tests

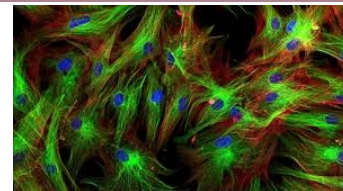
Possible next level of study - Higher Biology

Possible career paths There are a large number of careers connected with Biology. The careers cover a wide range of abilities and include careers in medicine, conservation, forensic science, marine biology, nutrition, pharmacology, teaching, nursing and many more.

A wide range of Bioscience subjects is open to university students, including Biochemistry, Biological Science, Ecology, Molecular Biology, Plant Science, Zoology, Sports Science and many more!



Biology - Higher



Entry Requirements: Students considering this course should have gained an A, B or C pass at National 5. It is recommended that pupils with a National 5 D award enter a different National 5 course within the same curricular area rather than progress to Higher in this subject

Course Description

The Higher Biology Course offers a broad and up-to-date selection of concepts and ideas relevant to the central position of life science within our society. Learners develop a deeper understanding of the underlying themes of biology — evolution and adaptation; structure and function; genotype and niche — and the scale of topics ranges from molecular through to whole organism and beyond. Learners develop scientific inquiry and investigative skills, scientific analytical thinking and evaluation skills, and the ability to understand and use scientific literacy to communicate ideas and issues



This course comprises 3 mandatory units

- DNA and the Genome- DNA structure, genome, DNA technology
- Metabolism and Survival - metabolic rate, respiration, circulation systems, survival strategies
- Sustainability and Interdependence— food security, photosynthesis, animal welfare, behaviour.

Assessment

At Higher, assessment of the course will comprise internally set topic and unit tests as well as a final exam set by the SQA. In addition, students should complete an assignment to be marked by the SQA. This is an extended research activity requiring data analysis skills and use of scientific method for structuring the response.

Home Study Expectations

Students can expect to be doing at least 1 and a half hours of study per week. This will comprise the following tasks:

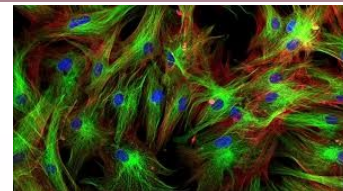
- Past paper question practice
- Research activities
- Data handling practice
- Assessment preparation

Possible next level of study - Advanced Higher Biology

Possible career paths The careers cover a wide range of abilities and include careers in medicine, conservation, forensic science, marine biology, nutrition, pharmacology, teaching, nursing and many more.

A wide range of Bioscience subjects is open to university students, including Biochemistry, Biological Science, Ecology, Molecular Biology, Plant Science, Zoology, Sports Science and many more!

Biology - Advanced Higher



Entry Requirements

Students considering this course should have gained an A, B or C pass at Higher. It is recommended that pupils with a Higher D award progress to Higher course within the same curricular area, rather than progress to Advanced Higher in this subject

Course Description

The Advanced Higher Biology Course is based on integrative ideas and unifying principles of modern biological science. It covers key aspects of life science at the molecular scale and extends to aspects of the biology of whole organisms that are among the major driving forces of evolution. In addition, the Advanced Higher Biology Course aims to develop a sound theoretical understanding and practical experience of experimental investigative work in biological science.



This course comprises 3 mandatory units

- Cells and Proteins
- Organisms and Evolution
- Investigative Biology

Assessment

At Advanced Higher, assessment of the course will comprise internally set topic and unit tests as well as a final exam set by the SQA. In addition, students should complete an investigation to be marked by the SQA. This is an extended research activity requiring data analysis skills and use of scientific method for structuring the response. The marks are allocated so that the paper accounts for 80% of the grade and the investigation 20%.

Home Study Expectations

Students can expect to be doing at least 1 and a half hours of study per week. This will comprise the following tasks:

- Past paper question practice
- Research activities
- Data handling practice
- Assessment preparation

Possible next level of study - College/University

Possible Career Paths

The careers cover a wide range of abilities and include careers in medicine, conservation, forensic science, marine biology, nutrition, pharmacology, teaching, nursing and many more.

A wide range of Bioscience subjects is open to university students, including Biochemistry, Biological Science, Ecology, Molecular Biology, Plant Science, Zoology, Sports Science and many more!

Chemistry - National 3/4/5

Course Description

National Qualifications in Chemistry cover a variety of contexts relevant to chemistry's impact on the environment and society. This includes the chemistry of the Earth's resources, the chemistry of everyday products and environmental analysis. Chemistry will help to progress numeracy skills in real life contexts and will help develop analytical thinking skills.

Units

1. Chemical changes and structure: develops pupil knowledge in chemistry from atomic structures to acids.
2. Nature's Chemistry: looks at hydrocarbons, alcohols and different types of fuels.
3. Chemistry in Society: Metals, plastics and radioactivity.

Assessment

National 3

Regular end-of-topic tests help monitor progress throughout the year

- 3 end of unit assessments
- 1 assessed practical
- Research task

National 4

- As above with an Added value unit

National 5

There are no end of unit assessments at National 5. Students will complete internally marked assessments, externally assessed Assignment and a final exam set by the SQA. National 5 candidates will also be required to complete an assessed practical. N5 Chemistry is assessed by an Exam (80% of marks) and an Assignment (20%), both set and marked by SQA.



Home Study Expectations - Students can expect to be doing at least 1 hour of homework per week which will include the following:

- Past paper questions
- Practical report writing
- Research tasks with data handling
- Problem solving activities/Revision for topic and unit tests

Possible next level of study - **Higher Chemistry**

Possible career path. Brewing, Cosmetics, Textiles, Photography, Colour and Dyes, Sporting Materials, Food Science, Pathology, Art Restoration, Lab Work, Teaching, Nursing, Engineering, Archaeology and all Chemical Industries.

ossible career path. Brewing, Cosmetics, Textiles, Photography, Colour and Dyes, Sporting Materials, Food Science, Pathology, Art Restoration, Lab Work, Teaching, Nursing, Engineering, Archaeology and all Chemical Industries.

Chemistry - Higher

Entry requirements: Students considering this course should have gained an A, B or C pass at National 5. It is recommended that pupils with a National 5 D award progress to a different National 5 course within the same curricular area rather than progress to Higher in this subject. If you do not have a National 5 award at A-C in this subject then discussion and approval from the Faculty CL is needed before entry into Higher can be confirmed

Course Description

The Higher Chemistry Course develops learners' curiosity, interest and enthusiasm for chemistry in a range of contexts. The skills of scientific inquiry and investigation are developed throughout the Course, and the relevance of chemistry is highlighted by the study of the applications of chemistry in everyday contexts.

Units

- Chemical Change and Structure (0.5 unit)
- Researching Chemistry (0.5 unit)
- Nature's Chemistry (1 unit)
- Chemistry in Society (1 unit)



Assessment

Assessment: Regular end-of-topic tests monitor progress throughout the year and allow practice of exam style questions; 3 end-of-unit tests; A final external exam and an assignment to be completed in school and marked by the SQA.

Home Study Expectations

Students can expect to be doing at least 1 and a half hours of study per week. This will comprise the following tasks:

- Past paper question practice
- Research activities
- Data handling practice
- Assessment preparation

Possible next level of study - Advanced Higher Chemistry

Possible Career Paths

Once you have a Chemistry qualification, you may be surprised at just how many places you could end up working.

Brewing, Cosmetics, Textiles, Photography, Colour and Dyes, Sporting Materials, Food Science, Pathology, Art Restoration, Lab Work, Teaching, Nursing, Engineering, Archaeology and all Chemical Industries.

After Industry, Commerce is one of the largest employers of Chemistry graduates because of the strong problem-solving skills developed by chemistry students. A Chemistry degree can open opportunities in banking, ac-

Chemistry - Advanced Higher

Entry Requirements: Students considering this course should progress to A, B or C pass at Higher. It is recommended that pupils with a Higher D award progress to Higher course within the same curricular area rather than progress to Advanced Higher in this subject.

Course Description

The purpose of the Advanced Higher Chemistry Course is to develop learners' knowledge and understanding of the physical and natural environments beyond Higher level. The Course builds on Higher Chemistry, continuing to develop the underlying theories of chemistry and the practical skills used in the chemistry laboratory. The Course also develops the skills of independent study and thought that are essential in a wide range of occupations.

Units

- Inorganic and Physical Chemistry
- Organic Chemistry and Instrumental Analysis
- Researching Chemistry



Assessment

There are mandatory unit assessments for all parts of the course, which must be passed. If a candidate fails the final exam, they will still get credit for unit passes. A complete set of unit passes earns the same number of tariff points as an A pass at Higher.

External assessment of Advanced Higher Chemistry is by an Exam (77% of marks) and a Project (23%), both marked by SQA. Projects typically comprise around 3 linked experiments, written up in a 2500-4500 word report.

Home Study Expectations

Students can expect to be doing at least 1.5 hours of homework per week which will include the following:

- Past paper questions
- Practical report writing
- Research tasks with data handling
- Problem solving activities
- Revision for topic and unit tests

Possible next level of study - HNC/D, Degree

Possible career paths Brewing, Cosmetics, Textiles, Photography, Colour and Dyes, Sporting Materials, Food Science, Pathology, Art Restoration, Lab Work, Teaching, Nursing, Engineering, Archaeology and all Chemical Industries.

Laboratory Science - Skills for Work: National 5

Entry requirements

Students who are interested in taking a more vocational route with greater emphasis on developing practical skills should be interested in taking this course. It focuses on developing skills and knowledge that will improve the candidates chances of a successful career in technical support within the sciences. Students who have been successful at either Level 3 or level 4 science will meet the entrance requirements.

Course Description

National 5 Skills for Work: Laboratory Science is an introductory qualification. The course provides a broad experiential introduction to laboratory science. Learners will explore a variety of industries and services, and career opportunities, in science laboratories locally, nationally, and globally. There is a heavy emphasis on demonstrating practical skills as well as research and investigation skills.

Units Studied

- Careers using Laboratory Science
- Laboratory Science: Working in a Laboratory
- Laboratory Science: Practical Skills
- Laboratory Science: Practical Investigation

Assessment

Learners must pass all four units to achieve this qualification. There is a mixture of practical and open book written assessments. The course is not graded and is assessed internally within the school.

Home Study Expectations

Students can expect to be doing at least 1 hour of homework per week which will include the following:

- Practical report writing
- Research tasks with data handling
- Problem solving activities

Possible next level of study - National Courses or Units, Further/Higher education, vocational training, employment.

Possible Career Paths - Brewing, Cosmetics, Textiles, Photography, Colour and Dyes, Sporting Materials, Food Science, Pathology, Art Restoration, Lab Work, Teaching, Nursing, Engineering, Archaeology and all Chemical, Biological and Physical Industries.

Physics—National 4/5

Course Description

National Qualifications in Physics give learners an insight into the underlying nature of our world and its place in the universe. From the sources of the energy we use, to the exploration of space, Physics covers a range of applications and the relationships that have been discovered through experiment and calculation.

The National 5 Physics Course enables learners to develop a deeper understanding of physics concepts and the ability to describe and interpret physical phenomena using a variety of skills.

Units The course is comprised of:

- Electricity and Energy
- Waves and Radiation
- Dynamics and Space

Assessment

N5 Physics is assessed by an Exam (80% of marks) and an Assignment (20%), both set and marked by SQA.

There are also three Unit Assessments. These are not mandatory, but students who are judged to be unlikely to achieve at least a D grade in the Exam will be entered for these Units instead (the three N5 Units are equivalent to a National 4).

Home Study Expectations

Students can expect to be doing at least 1 hour of homework per week which will include reading notes, past paper questions, research tasks, assessment preparation and tutorial questions using the Isaac online learning platform developed by Cambridge University.

Possible next level of study - Higher Physics or Engineering Science

Possible Career Paths

The career opportunities available are vast due to the transferable skills gained whilst studying physics. Employers see a physics qualification as an indication of someone who will immediately be an asset to the organisation. This is because physics requires a logical and numerate mind. Problem solving, gained through studying physics, is of paramount importance to the future of technology and communication skills are developed through report-writing and presentations. Computing and practical skills are second nature to those trained in physics.

Physics—Higher

Entry requirements

Students considering this course should have gained an A, B or C pass at National 5. It is recommended that pupils with a National 5 D award progress to National 5 course within the same curricular area rather than progress to Higher in this subject.

Course Description

The Higher Physics Course develops learners' curiosity, interest and enthusiasm for physics in a range of contexts. The skills of scientific inquiry and investigation are developed throughout the course, and the relevance of physics is highlighted by the study of the applications of physics in everyday contexts.

This course is comprised of three units:

- Our Dynamic Universe
- Particles and Waves
- Electricity

Assessment

Higher Physics is assessed by an Exam (80% of marks) and an Assignment (20%), both set and marked by SQA.

There are also three Unit Assessments. These are not mandatory, but students who are judged to be unlikely to achieve at least a D grade in the Exam will be entered for these Units instead.

Home Study Expectations

Students can expect to be doing at least 1 hour of home study per week. This will be comprised of reading notes, research tasks, past paper questions, preparation for assessments and tutorial questions using the Isaac online learning platform developed by Cambridge University.

Possible next level of study - Advanced Higher Physics

Possible Career Paths

The career opportunities available are vast due to the transferable skills gained whilst studying physics. Employers see a physics qualification as an indication of someone who will immediately be an asset to the organisation. This is because:

- Physics requires a logical and numerate mind
- Problem solving, gained through studying physics, is of paramount importance to the future of technology
Communication skills are developed through report-writing and presentations
- Computing and practical skills are second nature to those trained in physics
- Teamwork and flexibility are essential in lab work and projects

Here are some of the jobs where you will find people who have studied Physics: Research and Development; Engineering; Information Technology; Finance; Telecommunications; the Electrical industry; Medicine; Astronomy; Weather Forecasting; Physiotherapy; Teaching; Law.

Physics—Advanced Higher

Entry requirements:

Students considering this course should have gained an A, B or C pass at Higher. It is recommended that pupils with a Higher D award progress to Higher course within the same curricular area rather than progress to Advanced Higher in this subject.

Course Description

The Advanced Higher Physics Course further develops learners' curiosity, interest and enthusiasm for physics in a range of contexts. The skills of scientific inquiry and investigation are developed throughout the course, and the relevance of physics is highlighted by the study of the applications of physics in everyday contexts.

Mandatory units

- Rotational Motion and Astrophysics
- Quanta and Waves
- Electromagnetism

Assessment

There are mandatory unit assessments for all four parts of the course, which must be passed. If a candidate fails the final Exam, they will still get credit for unit passes.

External assessment of Advanced Higher Physics is by an Exam (75% of marks) and a Project (25%), both marked by SQA. Projects typically comprise around 3 linked experiments, written up in a 2500-4500 word report.

Home Study Expectations

Students can expect to be doing at least 1 hour of home study per week. This will be comprised of reading notes, research tasks, past paper questions, preparation for assessments and tutorial questions using the Isaac online learning platform developed by Cambridge University.

Possible next level of study: University

Possible Career Paths

The career opportunities available are vast due to the transferable skills gained whilst studying physics. Employers see a physics qualification as an indication of someone who will immediately be an asset to the organisation. This is because:

- Physics requires a logical and numerate mind
- Problem solving, gained through studying physics, is of paramount importance to the future of technology
- Communication skills are developed through report-writing and presentations
- Computing and practical skills are second nature to those trained in physics
- Teamwork and flexibility are essential in lab work and projects

Here are some of the jobs where you will find people who have studied Physics: Research and Development; Engineering; Information Technology; Finance; Telecommunications; the Electrical industry; Medicine; Astronomy; Weather Forecasting; Physiotherapy; Teaching; Law.

Computing Science - National 4

Entry

Interest in Computing Science



Content

The Course has two mandatory Units in addition to the Added Value Unit.

Software Design and Development

The aim of this Unit is for the learner to develop basic knowledge, understanding and practical problem-solving skills in software design and development. Learners will develop basic computational thinking and programming skills through practical tasks using appropriate software development environments across a range of contemporary contexts. These tasks will involve simple features and straightforward contexts. They will also develop an understanding of how data and instructions are stored in binary form and how programming underpins computer applications. Learners will also explore the impact of contemporary software-based applications on society or the environment.

Information System Design and Development

The aim of this Unit is for the learner to develop basic knowledge, understanding and practical problem-solving skills in information system design and development. Learners will implement practical solutions using appropriate development tools to create databases, web-based information systems, multimedia information systems (and/or hybrids of these). These tasks will involve simple features and straightforward contexts. Learners will also develop an understanding of basic computer hardware, software, and connectivity and security issues through a range of practical and investigative tasks.

Computing Science Assignment

This Unit requires the learner to apply skills and knowledge from the other Units to analyse and solve an appropriate challenging computing science problem.

Assessment

National 4 is internally assessed and is not graded.

Progression

This course or its Units may provide progression to other qualifications such as National 5 Computing Science. Students may move to further study, employment and/or training.

Careers/Employability

A significant number of people do not have the skills to prosper in the digital era. As a result, pupils with digital qualifications can expect to have a wider choice of careers and expect to earn more. Careers could include - IT Technician, web and software development, computer programming, cyber security, database development, digital marketing and many more.

Computing Science - National 5



Content

The course includes four mandatory units in addition to the course assessment.

Software Design and Development

Learners develop knowledge, understanding and practical problem-solving skills in software design and development, through a range of practical and investigative tasks using appropriate software development environments. This develops their programming and computational-thinking skills by implementing practical solutions and explaining how these programs work.

Computer Systems

Learners develop an understanding of how data and instructions are stored in binary form and basic computer architecture. They gain an awareness of the environmental impact of the energy use of computing systems and security precautions that can be taken to protect computer systems.

Database Design and Development

Learners develop knowledge, understanding and practical problem-solving skills in database design and development, through a range of practical and investigative tasks. This allows learners to apply computational-thinking skills to analyse, design, implement, test, and evaluate practical solutions, using a range of development tools such as **SQL**.

Web Design and Development

Learners develop knowledge, understanding and practical problem-solving skills in web design and development, through a range of practical and investigative tasks. This allows candidates to apply computational-thinking skills to analyse, design, implement, test and evaluate practical solutions to web based problems, using a range of development tools such as HTML, CSS and Javascript.

Assessment

Coursework Assignment – **31%**

External Question Paper (2 hours) – **69%**

Progression

Other qualifications such as Higher Computing Science or NPA in Cyber Security

Further study, employment and/or training

Employability

Want to improve the world we live in, get a great job and earn an above average salary? Recent government announcements state that Scotland will need an estimated 11,000 new digital/ICT workers each year to meet current and future demand. Similarly, a significant number of people do not have the skills to prosper in the digital era. Careers could include - IT Technician, web and software development and computer programming.

Design Engineer Construct - Level 2 (SCQF6)

1 year/2 Year Course



Entry Requirements

The one year level 2 course is available to students who have studied DEC Level 1.

Students who have not studied Level 1 will go through the Level 1 course learning from August – February, and then begin Level 2 with a view to completing it the following year.

Course Description

Design Engineer Construct!® (DEC!) is an accredited learning programme for secondary-school age students and has been expertly developed to create and inspire the next generation of Built Environment professionals. Through a project-based approach, DEC! applies pure academic subjects to the latest construction industry practices. The result is young people with real-world practical experience and employability skills.

Units

Unit 1: Defining a Sustainable Construction Project – **3 credits 20H**

Unit 2: Roles in Construction Teams – **7 credits 60H**

Unit 3: Producing a Technical Design and Sharing Information – **3 credits 20H**

Unit 4: Planning, costing and presenting a sustainable building project – **3 credits 20H**

Assessment

Coursework will be internally assessed and externally verified.

There is a unit certificate available for each unit and all units must be assessed as satisfactory through coursework at level 2 or higher before an exam entry is permitted. The exam will then differentiate grades A*, A, B, C.

Home Study Expectations

Students can expect to be doing at least 2 hours of homework or home study per week, which will include the following:

- Completing outstanding design folio work
- Undertaking teacher-set homework tasks.
- Self-directed study of course notes.
- There is an expectation that learners will attend class at extra times to ensure that they meet deadlines and produce their very best work

Graphic Communication - National 4 & 5



Entry requirements

National 4: Appropriate Graphics Level 3 CfE outcomes.

National 5: National 4 Graphic Communication/appropriate Graphics Level 4 CfE outcomes.

Course Description

The National 4/5 course provides opportunity for students to gain skills in reading, interpreting, and creating graphic communications. It is a continually evolving course that is designed to reflect contemporary working practice from a range of creative and design industries, and prepare students for a future in a related field at college, university and employment. Students are set a range of self-directed practical graphic tasks that require them to initiate, develop and communicate ideas and solutions graphically.

They will develop skills in the application of manual and digital graphic techniques to create visual impact, and an enhanced level of visual literacy through graphic experiences. The course is practical, exploratory and experiential in nature. It combines manual sketching and drawing, 3D computer modelling, technical graphics including professional standards, and creative graphic design. This sees students engage with department technologies including professional standard software, laser cutter and 3D printer.

Units - There are 2 units for both Nat 4 and Nat 5 level.

- 2D Graphic Communication
- 3D & Pictorial Graphic Communication

Assessment

Nat 4 Each unit will be undertaken and assessed internally during Term 1. Nat 4 students must pass each unit to achieve a course award.

There is also a National 4 Course Assessment Task that students undertake during Term 2. Again, Nat 4 students must pass this task to achieve a course award.

Nat 5 Each unit will be undertaken and assessed internally during Term 1. Nat 5 student who achieve a passing standard across these two units will progress to undertake full Nat 5 course assessment work in Term 2.

At National 5 course assessment comprises of two mandatory components:

Course Assessment Task Portfolio (33% final grade)

Examination (66% final grade)

Home Study Expectations

Students can expect to be doing at least 2 hours of homework or home study per week, which will include the following:

- Completing outstanding folio work.
- Undertaking teacher-set homework tasks.
- Self-directed study of course notes.
- We would encourage learners to attend study support to ensure that they meet deadlines and produce their very best work

Possible next level of study - N5/Higher Graphic Communication

Possible career paths - There are a varied and wide-ranging number of career paths that success in Graphic Communication can lead to including – Architecture, Engineering, Built Environment, Product Design, Graphic Design, Web Design, Games Design, Marketing, Computer based graphics, Advertising, Education.

Graphic Communication - Higher



Entry Requirements

Pass at National 5 Graphic Communication

Course Description

The Higher course provides a natural and challenging progression from the National 5 Graphic Communication award. It is designed to reflect contemporary working practice from a range of creative and design industries, and prepare students for moving into a related field at college, university and employment. The course offers senior students the opportunity to create folio pieces for use in applications.

Students undertake a range of extended self-directed graphic tasks that require them to initiate, develop and communicate complex ideas and solutions graphically. They will strengthen established skills in the application of manual and digital graphic techniques to create visual impact, and an enhanced level of visual literacy through graphic experiences. The course combines manual sketching and drawing, 3D computer modelling, technical graphics including professional standards, and creative graphic design. This sees students engage with department technologies including professional standard software, laser cutter and 3D printer.

Units - There are 2 mandatory units for the Higher.

- 2D Graphic Communication
- 3D & Pictorial Graphic Communication

Assessment

Both units will be undertaken and assessed internally during Term 1. Higher students must pass both units. In Term 2 students will progress to undertake Higher course assessment work, comprising of two mandatory components:

Course Assessment

Task Portfolio - (50% final grade)

Examination - (50% final grade)

Home Study Expectations

Students are expected to undertake at least 2 hours of homework or home study per week, which will include the following:

- Completing outstanding folio work.
- Undertaking teacher-set homework tasks.
- Self-directed study of course notes.
- We would encourage learners to attend study support to ensure that they meet deadlines and produce their very best work

Possible next level of study

Advanced Higher Graphic Communication

Alternative related subject (Design & Manufacture, Design Engineer Construct).

Possible career Paths - There are a varied and wide-ranging number of career paths that success in Graphic Communication can lead to including – Architecture, Engineering, Built Environment, Product Design, Graphic Design, Web Design, Games Design, Marketing.

Practical Woodwork National 4/5



Course Description

Bench and machine skills in woodworking.

Mandatory Units

Pupils will undertake learning across three units.

- Flat-frame construction - Pupils develop skills, knowledge and understanding in the use of woodworking tools and in making woodworking joints and assemblies commonly used in flat-frame joinery, involving complex features.
- Carcase construction - Pupils develop skills, knowledge and understanding in the use of woodworking tools and in making woodworking joints and assemblies commonly used in carcase construction, involving complex features.
- Machining and Finishing - Pupils develop skills, knowledge and understanding in using machines and power tools. They will also develop skills in a variety of woodworking surface preparations and finishing techniques.

Each unit comprises:

- Practice joints
- Log book with written evidence;
- A finished wooden product (specified by SQA)

Assessment

Each unit will be assessed internally and is subject to SQA verification. Students must pass each unit to achieve a course award. These units must be completed to set deadlines. They are rigorously internally assessed and are verified by the SQA.

At National 4 there is an added value unit.

Home Study Expectations

- Students are encouraged to study for unit tests, but work for the course has to be completed in class under supervision.

Possible next level of study

- Pupils can also progress onto a modern apprenticeship in the Construction Industry or college course.

Possible career paths - Carpentry / joinery. Trade courses and apprenticeships. The course develops a range of transferrable skills and moves students a great deal closer to being work ready.

Core Skills Communications - English & Communications National 2

Entry Requirements

S4 students will be coursed appropriately based on the CfE levels in English and Literacy achieved by the end of S3. S5/6 students will be able to progress their skills upon completion of the appropriate course in S4.

Course Description

National 2 English & Communications aims to develop learners' skills in reading, watching, listening to and understanding texts and in communicating their responses. The Course Specification has been designed to ensure that there are no unnecessary barriers to learning or assessment. The individual needs of learners will be considered when planning learning experiences, selecting assessment methods and considering alternative evidence.

Mandatory Units

- English and Communication: Understanding Language
- English and Communication: Creating Text
- English and Communication: Listening and Talking

Assessment

Your teacher(s) will carry out assessments throughout the year based on the work you complete in class. You will be awarded a pass or fail. There will be opportunities for reassessment. There are no formal examinations.

Home Study Expectations Not Applicable

Possible next level of Study

English National 3 Literacy or English National 3 Full Award

Possible Career Paths

This course aims to improve communication skills which will help with future interviews and job applications.

English - National 3/4/5

Entry requirements

S4 students will be coursed appropriately based on the CfE levels in English and Literacy achieved by the end of S3. S5/6 students will be able to progress their skills upon completion of the appropriate course in S4.

Course Description: The main purpose of English is to provide learners with the opportunity to develop the skills of listening, talking, reading and writing in order to understand and use language. As learners develop their literacy skills, they will be able to process information more easily, apply knowledge of language in practical and relevant contexts, and gain confidence to undertake new and more challenging tasks in a variety of situations. The Course develops understanding of the complexities of language through the study of a wide range of texts and develops high levels of analytical thinking and understanding of the impact of language.

Mandatory Units

- Understanding & Analysis (N3 – Understanding Language)
- Creation and Production (N3 – Producing Language)

National 3 and National 4 also require the mandatory completion of the Literacy Unit. This is not mandatory at National 5, but there is an expectation that all National 5 students will also be entered for this Award at the appropriate level.

Assessment

Each unit will be assessed internally and students must pass each unit to achieve a course award. These units are rigorously internally assessed and are verified by the SQA.

At National 4 there is an added value unit

The Assignment At National 5 assessment of the course comprises 2 components 1.

1. Portfolio (30% of final grade)
2. Examination (70% of final grade)

Home Study Expectations

Students can expect to be doing at least 2 hours of homework per week which will include the following:

- Online research
- Close reading exam practice
- Regular engagement with a variety of texts
- Producing and redrafting a portfolio of writing
- Revision of texts

Possible next level of Study - Higher English

Possible career paths - English as a qualification demonstrates clear communication skills which are vital in all career paths.

English - Higher

Entry requirements

Students considering this course should have gained a pass at National 5.

Course Description

The main purpose of English is to provide learners with the opportunity to develop the skills of listening, talking, reading and writing in order to understand and use language. As learners develop their literacy skills, they will be able to process information more easily, apply knowledge of language in practical and relevant contexts, and gain confidence to undertake new and more challenging tasks in a variety of situations. The Course develops understanding of the complexities of language through the study of a wide range of texts and develops high levels of analytical thinking and understanding of the impact of language.

This course comprises 2 mandatory units

- Understanding and Analysis
- Creation and Production

Assessment

Each unit will be assessed internally and students must pass each unit to achieve a course award. These units are rigorously internally assessed and are verified by the SQA.

At Higher assessment of the course comprises 2 components

1. Portfolio (30% of final grade)
2. Examination (70% of final grade)

Home Study Expectations

Students can expect to be doing at least 2 hours of homework per week which will include the following:

- Online research
- Close reading exam practice
- Regular engagement with a variety of texts
- Producing and redrafting a portfolio of writing
- Revision of texts

Possible next level of study - Advanced Higher English

Possible career paths

English as a qualification demonstrates clear communication skills which are vital in all career paths. Higher English is a compulsory qualification for University entrance for a number of different courses. Further courses may be taken at university in a variety of related disciplines such as Journalism and Film and Media.

English - English for Speakers of Other Languages (ESOL) National 3/4/5

Entry Requirements

S4 students will be coursed appropriately based on the CfE levels in English and Literacy achieved by the end of S3. S5/6 students will be able to progress their skills upon completion of the appropriate course in S4.

Course Description

The ESOL course develops the skills of reading, writing, listening and speaking for learners whose first language is not English, enabling them to apply these language skills in practical and relevant situations. The aims of the course are to enable learners to develop the ability to understand and use English language, as appropriate to purpose, audience and context. Learners will also more confidently apply knowledge of English language through planning and research.

Mandatory Units

1. ESOL for Everyday Life
2. ESOL in Context – Work and Study

Assessment

Each unit will be assessed internally and students must pass each unit to achieve a course award. These units are rigorously internally assessed and are verified by the SQA.

At National 4 there is an added value unit- The Assignment

At National 5 assessment of the course comprises 2 components

- Performance: Speaking and Listening (30% of final grade)
- Examination (70% of final grade)

Home Study Expectations

Students can expect to be doing at least 2 hours of homework per week which will include the following:

- Revision of new vocabulary
- Regular reading exercises
- Writing tasks
- Preparation for the Speaking performance

Possible next level of Study - Higher ESOL

Possible Career Paths - English as a qualification demonstrates clear communication skills which are vital in all career paths.

English - English for Speakers of Other Languages (ESOL) Higher

Entry Requirements

S5/6 students will be able to progress their skills upon completion of the appropriate course in S4/5 – either N5 English or N5 ESOL.

Course Description

The ESOL course develops the skills of reading, writing, listening and speaking for learners whose first language is not English, enabling them to apply these language skills in practical and relevant situations. The aims of the course are to enable learners to develop the ability to understand and use English language, as appropriate to purpose, audience and context. Learners will also gain confidence to do new and more challenging tasks in a wide variety of situations. The language level studied at Higher ESOL is detailed and complex in line with C1 level on the Common European Framework of Reference for Languages.

There are 2 mandatory units

- ESOL for Everyday Life
- ESOL in Context – Work and Study

Assessment

Each unit will be assessed internally and students must pass each unit to achieve a course award. These units are rigorously internally assessed and are verified by the SQA.

At Higher level assessment of the course comprises 2 components

1. Performance: Speaking and Listening (30% of final grade)
2. Examination (70% of final grade)

Home Study Expectations

Students can expect to be doing at least 2 hours of homework per week which will include the following:

- Revision of new vocabulary
- Regular reading exercises
- Writing tasks
- Preparation for the Speaking performance

Possible next level of study - College or University courses.

Possible career paths - English as a qualification demonstrates clear communication skills which are vital in all career paths.

Media - National 4 & 5

Entry Requirements

Students will be studying National 5 English or National 4 English or at least one Social Subject at National 5.

Course Description

Media plays an increasing role in our day-to-day lives and the ability to evaluate and judge this media is incredibly valuable. By learning film and advertising theory and putting it into practice in your own creation, the course will help you to gain insights into the sociology of our society and the ways in which the media affects politics, oppressed groups and our wider ideas of citizenship.

Assessment

At National 5, assessment of the course comprises two components:

1. Assignment – the production and evaluation of a piece of moving image (50% of Final Grade).
2. Examination (50% of final grade)

Home Study Expectations

Students can expect to be doing at least 2 hours of homework per week, which will include the following:

- Online research
- Exam question practice
- Producing and evaluating their assignment
- Revision of key vocabulary and texts

Possible next level of study - Higher Media

Possible Career Paths

Media is an opportunity for you to display your communication skills in more creative and less traditional ways. Its strong focus on sociology will allow you to evaluate how situations are affected by environmental factors while teaching you the key team/social skills that are necessary in every work place. This extremely versatile course would suit those going into the world of media & production, marketing and many other professions!

Media - Higher

Entry requirements

Students will be studying or have already attained National 5 English or have already attained National 5 Media

Course Structure/Outline

The Media course focuses on the analysis of film, and also on developing film-making skills. Pupils will analyse feature films, TV programmes and adverts, as well as studying the role of the media within contemporary society. They will also work independently to create a short film.

Assessment

Assignment (50% of final grade)

Pupils work independently to create their own short film. They also submit a write up of their research and planning, and an evaluation of the process and the finished film. The work is created and redrafted throughout the year and the final version is then submitted to SQA for external marking.

Exam (50% of final grade)

There are two papers:

- ⇒ Analysis of Media Texts: Pupils are asked to respond to tasks relating to film texts they have studied in class, and they are also required to write an analysis of a pair of unseen print texts provided in the exam paper.

- ⇒ The Role of the Media: Pupils are asked to write an extended essay discussing the role of the media in contemporary society, evidencing the points they make by analysing media texts such as adverts they have studied in class.

Home Study Expectations

Students can expect to be doing at least 2 hours of homework per week, which will include the following:

- Online research
- Exam question practice
- Producing and evaluating their assignment
- Revision of key vocabulary and texts

Progression

Other literacy based subjects at Higher Level.

Employability

Media is an opportunity for you to display your communication skills in more creative and less traditional ways. Its strong focus on sociology will allow you to evaluate how situations are affected by environmental factors while teaching you the key team/social skills that are necessary in every work place. This extremely versatile course would suit those going into the world of media & production, marketing and many other professions where communication is a central factor.

Modern Languages (French/Spanish) - National 4/5

Course Description

The study of a modern language has a unique contribution to make to the development of cultural awareness, as it provides learners with a means of communicating directly with people from different cultures, enhancing their understanding and enjoyment of other cultures and of their own. They gain insights into other ways of thinking and other views of the world, and therefore develop a much richer understanding of active citizenship.



Assessment

Each unit will be assessed internally and students must pass each unit to achieve a course award. These units are rigorously internally assessed and are verified by the SQA.

At National 4 there are 3 mandatory units:

1. Understanding Language Unit.
2. Using Language Unit.
3. Added Value Unit (assignment)

At National 5 assessment of the course comprises 2 components

1. Performance -Talking
2. Assignment - Writing
3. Examination

In the final exam

- A Reading exam
- A Writing exam
- A Talking exam (in March)
- A Listening exam

Home Study Expectations

Students can expect to be doing at least 2 hours of homework per week which will include the following:

- Revision of new vocabulary
- Regular Reading exercises
- Writing tasks
- Preparation for the Speaking performance
- Past papers

Possible next level of study Higher Modern Languages

Possible Career Paths

There are a varied and wide-ranging number of career paths that success in a Modern Language can lead to including – business, politics, media, translation, teaching, economics, communications.

Modern Languages (French/Spanish) - Higher

Entry Requirements - a 'pass' at National 5

Course Description

The study of a modern language has a unique contribution to make to the development of cultural awareness, as it provides learners with a means of communicating directly with people from different cultures, enhancing their understanding and enjoyment of other cultures and of their own. They gain insights into other ways of thinking and other views of the world, and therefore develop a much richer understanding of active citizenship.

Assessment

Assignment - Writing

Final exam

- A Reading/Translation exam
- A Writing exam
- A Talking exam (in March)
- A Listening exam



Home Study Expectations

Students can expect to be doing at least 2 hours of homework per week which will include the following:

- Revision of new vocabulary and essential grammar points
- Regular Reading exercises
- Writing tasks
- Preparation for the Speaking performance
- Past papers

Pupils will be given choice within the 4 broad themes. The skills of talking, listening, writing and listening are assessed across two units of study: Understanding Language and Using Language.

Possible next level of Study - Advanced Higher Modern Languages which could be studied as part of the Consortia Agreement across other schools.

Employability

Language skills are in demand and can be used in almost any career, particularly in businesses that trade internationally. Careers could include, primary or secondary teacher, translator, tour manager, diplomatic service advisor, international aid worker and many more.

Geography - National 4/5



Course Description

Geography opens up for learners the physical environment (rivers, mountains, seas and weather) around them and the ways in which people interact with this environment. The purpose of Geography is to develop the learner's understanding of our changing world and its human and physical processes. Opportunities for practical activities, including fieldwork, will be encouraged, so that learners can interact with their environment. The contexts for study are local, national, international and global. Geography draws upon the social and natural sciences: interdisciplinary learning is therefore fundamental to geographical study and encourages links with other disciplines.

In the 21st century, with growing awareness of the impact of human activity upon the environment and scarce resources, the study of Geography fosters positive lifelong attitudes of environmental stewardship, sustainability and global citizenship. This qualification will furnish learners with the knowledge and skills to enable them to contribute effectively to their local communities and wider society.

Mandatory Units - There are 3 mandatory units

- Physical Environments
- Human Environments
- Global Issues

Assessment

National 4 is assessed internally. The three units are rigorously internally assessed and are verified by the SQA. There is also an assessed report to write based on real world geographical research.

At National 5 assessment of the course comprises 2 components.

- Added Value Unit Assignment Write-up
- Examination

The write-up involves pupils using geographical skills to gather original data and present a report based around a complex research question. They must then write up their findings in one hour. This is worth 20% of their overall grade.

Home Learning Expectations

Homework is issued on a regular basis formally but there is an expectation that pupils are revising notes, completing tasks that are unfinished from class and taking a general interest in the subject through the internet and television.

Possible next level of study Higher Geography

Possible Career Paths There are a varied and wide-ranging number of career paths that success in Geography can lead to including: cartographer, commercial/residential surveyor, environmental consultant, geographical information systems officer, planning and development surveyor, secondary school teacher, town planner.

Geography - Higher



Entry Requirements:

Students considering this course should have gained an A, B or C Pass at National 5. It is recommended that pupils with a National 5 D award progress to different National 5 course within the same curricular area rather than progress to Higher in this subject.

Course Description

The purpose of Higher Geography is to still further develop the learner's understanding of our changing world and its human and physical processes. Opportunities for practical activities, including fieldwork, will be encouraged, so that learners can interact with their environment. The skills developed in this course lean heavily on pupil's experience in National 5 Geography and often advanced key concepts rely on knowledge already firmly developed already at this level

The contexts for study are local, national, international and global. Geography draws upon the social and natural sciences: interdisciplinary learning is therefore fundamental to geographical study and encourages links with other disciplines. The research methods for the Higher Geography AVU assignment are significantly more advanced than at National 5.

Mandatory units - There are 3 mandatory units

- Physical Environments
- Human Environments
- Global Issues

Assessment

At Higher level the course has 2 main components

1. Added Value Unit Assignment Write-up
2. Examination

The write-up involves pupils using geographical skills to gather original data and present a report based around a complex research question. They must then write up their findings in one hour. This is worth 27% of their overall grade.

Home Study Expectations

Is issued on a regular basis formally but there is an expectation that pupils are revising notes, completing tasks that are unfinished from class and taking a general interest in the subject through the internet and television.

Possible next level of study - Advanced Higher Geography—if this is not available at Drummond then there is the possibility of studying this as part of the Consortia Agreement in other schools.

Possible Career Paths - There are a varied and wide-ranging number of career paths that success in Geography can lead to including: cartographer, commercial/residential surveyor, environmental consultant, geographical information systems officer, planning and development surveyor, secondary school teacher, town planner.

History - Higher

Entry Requirements

Students considering this course should have gained an A, B or C pass at National 5. It is recommended that pupils with a National 5 D award progress to National 5 course within the same curricular area rather than progress to Higher in this subject.



Course Description

History opens up the world of the past for learners. The purpose of History is to provide learners with insights into their own lives and the society in which they live. By examining the past, they discover their heritage as members of a community, a country and a wider world. They place themselves and their society in the context of the past. This purpose will be achieved through successful study of the three Units of the Course which cover Scottish, British, European and World contexts

Mandatory units - There are 3 mandatory units

- Scotland and the Treaty of Union (1689–1740)
- USA (1918 – 1968)
- Britain (1851-1951)

Assessment

At Higher level the course has 2 main components

- Added Value Unit Assignment Write-up
- Examination

The write-up involves pupils using historical skills to analyse historical data and write an essay based around a complex historical question. They must then write up their findings in one and a half hours. This is worth 27% of their overall grade.

Home Study Expectations

Homework is issued on a regular basis formally but there is an expectation that pupils are revising notes, completing tasks that are unfinished from class and taking a general interest in the subject through the internet and television.

Possible next level of study Advanced Higher History - if this is not available at Drummond then there is the possibility of studying this as part of the Consortia Agreement in other schools.

Possible Career Paths - There are a varied and wide ranging number of career paths that success in History can lead to including: Heritage Manager, Historic buildings inspector or conservation officer, Museum education officer, Museum or gallery curator, Museum or gallery exhibitions officer, Secondary school teacher, Academic librarian, Archaeologist, Archivist, Broadcast journalist, Civil Service administrator, Editorial assistant, Information officer, Solicitor.

Modern Studies - National 4/5



Course Description

Modern Studies is the study of social, political and economic elements of living in an ever-complex modern society. Students will have the opportunity to engage in discussions and debates, analysis and evaluation. The skills of conclusions, decision making and identifying bias are essential to success in Modern Studies.

Students will leave the course possessing an excellent awareness of issues surrounding crime in the UK, the political system of Scotland and the UK as well as the causes and consequences of international terrorism.

Mandatory units

There are 3 mandatory units for National Modern Studies;

- Social Issues in the UK – Crime and the Law
- World Power/Issue – International Terrorism
- Democracy in Scotland and the UK.

Assessment

Each unit will be assessed internally and students must pass each unit to achieve a course award. These units are rigorously internally assessed and are verified by the SQA.

At National 4 there is an added value unit- Added Value Unit (National 4) The AVU allows for personalisation and choice, including a poster, leaflet or presentation. Students must demonstrate a good understanding of making a conclusion or detecting bias and exaggeration from two sources. This is internally assessed.

At National 5 assessment of the course comprises 2 components; Added Value Unit – this is worth 20% of the student's final grade. This is completed by March in class, the AVU must be completed under exam conditions and students must use a range of sources to demonstrate a very good understanding of a topic of their choice, as well as the skill of making conclusions. This is externally assessed by the SQA Examination – this is undertaken during the main SQA examination diet.

Home Study Expectations

Students can expect to be doing at least 2 hours of homework per week which will include the following:

- Research for AVU
- Reaching appropriate conclusions, decisions and analysis through the practice of skills-based questions
- Practising their Point, Explain and Example (PEE) format for knowledge-based questions
- Continuously keeping abreast of current affairs by watching the news, as well as informative documentaries such as BBC Panorama to aid learning out with the classroom
- Student are encouraged to attend study support to ensure that they meet deadlines and produce their very best work

Possible next level of study - Higher Modern Studies

Possible Career Paths - There are a varied and wide-ranging number of career paths that success in Modern Studies can lead to. These include Law, Nursing, Teaching, the Police, Politics and decision making in central government, digital journalism, and Social Sciences at College.

Modern Studies - Higher



Entry Requirements

Students considering this course should have gained an **A, B or C pass at National 5**. It is recommended that pupils with a National 5 D award progress to National 5 course within the same curricular area rather than progress to Higher in this subject.

Course Description

Modern Studies is the study of social, political and economic elements of living in an ever-complex modern society. Students will have the opportunity to engage in discussions and debates, analysis and evaluation. The skills of conclusions and identifying bias are essential to success in Modern Studies.

Students will have leave the course possessing an outstanding awareness of issues surrounding social inequalities in the UK, politics in Scotland and the UK as well as the inequality faced by developing countries.

Mandatory units This course comprises 3 mandatory units;

- **Social Issues in the UK**- this unit provides scope to analyse the successes and failures of the Scottish and UK Governments in addressing social inequality in the UK. This course provides an in-depth analysis on what causes social inequalities, groups who are more likely to experience inequalities and discusses the concept of whether social inequalities are the responsibility of everyone or the individual
- **The Politics of Underdevelopment** - this unit looks in-depth at inequalities within the developing world, the part played by the UK in polarising these inequalities and analysing and evaluating the causes of underdevelopment, the social, economic and political impact of underdevelopment and the successes and failures of international programmes in tackling underdevelopment throughout the world.
- **Democracy in Scotland and the UK**- this unit provides an extremely in-depth analysis of voting systems and factors impacting on voting behaviour, the influence of the media and pressure groups on voting patterns, the emergence of political hate crime following Brexit, the economic and social case for independence in Scotland and the difference in political party ideology.

Assessment

All three units are assessed internally and are required to be passed to progress onto the final exam.

An assignment makes up 27% of the student's final grade. This is usually completed before April. The assignment must be completed under exam conditions and students must use a range of sources (up to 10) to demonstrate an excellent understanding of a topic of their choice, as well as the skill of making conclusions. Students must also demonstrate an ability to synthesis sources, exemplifying cause and effect and making links. This is externally assessed by the SQA.

Home Study Expectations

Students can expect to be doing at least 2 hours of homework per week which will include the following:

- Contacting experts in their field as a source for Modern Studies assignment
- Research for assignment topics
- Creating surveys and carrying these out, analysing the data obtained to look for conclusions
- Practising past paper questions, including practicing the Point, Explain, Example, Analysis and Rebuttal structure (PEEAREEL)
- Practising the skills of making conclusions, evaluating reliability and detecting bias

People and Society National 3/4

Entry requirements

No formal qualifications are required to join the National 3 course. **A pass at national 3 is required for national 4 entry.**

Course Description

People and Society qualifications develop skills in investigating, making decisions and comparing and contrasting. The Courses draw on key concepts from all the social subjects and builds the skills required to move on to discrete social subjects such as Geography, History or Modern Studies.

Mandatory units There are 2 mandatory units

- Investigating Skills
- Comparing and Contrasting
- Making Decisions

Assessment

Each unit will be assessed internally and students must pass each unit to achieve a course award. These units are rigorously internally assessed and are verified by the SQA.

At National 4 there is an added value unit- Practical Activity (National 4).

Home Study Expectations

Students will not be required to do regular homework but they may be given some tasks to help them to build up the skills required to pass this course. Short homework tasks may include: -

- Revision of new vocabulary
- Research
- Taking photographs of the local area.
- Basic comparison questions – comparing buildings, statistics, services etc.

Possible next level of study A National 4 People and Society allows entry to a National 5 Social Subject.

Possible career paths There are a varied and wide-ranging number of career paths that success in Social Subjects like People and Society can lead to including – business, hospitality, planning and journalism. People and Society National 4 is a qualification which will help students to gain access to level 4 or 5 courses at Edinburgh College.

RMPS - National 4 & 5



Course Description

Where did the universe come from? Why is there so much suffering in the world? Can euthanasia be morally justified? Are miracles real? These are the sort of questions that we consider in RMPS. Learners develop their skills in critical thinking and analysis, through understanding and evaluating both sides of an argument and then expressing their own reasoned view. The RMPS class is a forum where different ideas and viewpoints can be expressed, and where the views of others are listened to with respect.

Mandatory units - There are 3 units we will study:

- World Religion: Islam or Christianity
- Morality and Belief: Morality, Medicine and the Human Body or Morality and Relationships
- Religious and Philosophical Questions: The Existence of God or Miracles

Assessment

National 4 is assessed internally. The three units are rigorously internally assessed and are verified by the SQA. There is also an assessed Added Value Unit to write based on a topic of the pupil's choice.

At National 5 assessment of the course comprises 2 components:

- Examination (80 marks)
- Assignment (20 marks)

The National 5 RMPS assignment allows candidates to demonstrate a range of skills, knowledge and understanding within the context of religious, moral and philosophical questions. Candidates choose the topic or issue they wish to research. They must then write up their findings in one hour. This is worth 20% of their overall grade.

Home Study Expectations

In addition to homework that is formally set, there is an expectation that pupils will be revising notes, completing any tasks that are unfinished from class and taking a general interest in the subject through media such as the internet, wider reading and television.

Possible next level of study Higher RMPS

Possible Career Paths

There are a varied and wide ranging number of career paths that value success in RMPS, including: Administration, Civil Service, Healthcare, Human Resources, Law, Politics, Psychology, Teaching and Management.

RMPS - Higher

Entry Requirements

Students considering this course should have gained a pass at National 5. It is recommended that pupils with a National 5 D award progress to National 5 course within the same curricular area rather than progress to Higher in this subject.



Course Description

Where did the universe come from? Why is there so much suffering in the world? Can euthanasia be morally justified? These are the sort of questions that we consider in RMPS. Learners develop their skills in critical thinking and analysis, through understanding and evaluating both sides of an argument and then expressing their own reasoned view. The RMPS class is a forum where different ideas and viewpoints can be expressed, and where the views of others are listened to with respect.

There are 3 units:

- World Religion: Islam or Christianity
- Morality and Belief: Religion, Medicine and the Human Body or Morality and Relationships
- Religious and Philosophical Questions: The Existence of God or Origins or Miracles

Assessment

At Higher level the course has 2 main components:

- Examination – 80 marks
- Assignment – 30 marks

The Higher RMPS Assignment is a substantial piece of work that allows candidates to demonstrate a range of skills, knowledge and understanding within the context of religious, moral and philosophical questions. Candidates choose the topic or issue they wish to research. They must then write up their findings in one and a half hours. This is worth around 27% of their overall grade.

Home Study Expectations

In addition to homework that is formally set, there is an expectation that pupils will be revising notes, completing any tasks that are unfinished from class and taking a general interest in the subject through media such as the internet, wider reading and television.

Possible next level of study Advanced Higher RMPS

Possible Career Paths

There are a varied and wide-ranging number of career paths that value success in RMPS, including: Administration, Civil Service, Healthcare, Human Resources, Law, Politics, Psychology, Teaching and Management.

Travel and Tourism National Level 4/5

Entry requirements

Learners would normally be expected to have attained the skills and knowledge required by one or more of the following or by equivalent experience or qualifications as this course is only available to S5 & S6 pupils.

National 4 English

People in Society N4

Geography N4

History N4

Modern Studies N4

Course Description

The National 4 and 5 Skills for Work: Travel and Tourism Course is an introductory qualification in travel and tourism. It develops the skills, knowledge and attitudes, needed for work in the travel and tourism industry.

Learners will develop:

- skills to become effective job-seekers and employees
- skills to deal effectively with all aspects of customer care and customer service in travel and tourism
- the product knowledge and skills to deal effectively with customer enquiries in relation to travel and tourism in Scotland, the rest of the United Kingdom and worldwide

Mandatory units

At SCQF level 5, the candidate will work alone or with others on tasks with minimum support.

National 4 and National 5 Travel and Tourism consists of 4 units:

1. Employability (including work placement)
2. Scotland Unit
3. UK and Worldwide Unit
4. Customer Service

Assessment

Learners must pass all of the required Units via the submission of portfolio evidence. This course is assessed and graded on a pass/fail basis.

Possible next level of study - Edinburgh College offer a level 6 course at their Granton Campus which can be accessed on a Tuesday/Thursday afternoon as part of the School College Partnership.

Home Study Expectations

Homework is issued on a regular basis formally but there is an expectation that pupils are completing tasks that are unfinished from class and taking a general interest in the subject through the internet and television.

Possible career paths - There are a varied and wide ranging number of career paths that success in Travel & Tourism can lead directly into, or via entry into college courses to develop skills in Marketing, Travel Agency, Hospitality, World Heritage, and Customer Services.

Health And Food Technology - National 4/5



Course Description

The purpose of this Course is to allow learners to develop practical and technological skills and knowledge and understanding to make informed food and consumer choices.

The Course has six broad and inter-related aims which allow learners to:

- Develop knowledge of the relationships between health, food and nutrition
- Develop knowledge of the functional properties of food
- Make informed food and consumer choices
- Develop the skills to apply their knowledge in practical contexts
- Develop organisational and technological skills to make food products
- Develop safe and hygienic practices in practical food preparation.

Mandatory units - There are 3 mandatory units

- Food for Health
- Food Product Development
- Contemporary Food Issues

Assessment - To achieve the Health and Food Technology Course at the following levels:

- Nat 5 – Exam and coursework assignment worth 50% each (A-D)
- Nat 4 – Pass all assessment for the required units and end of course assignment (Added Value Unit)

Home Study Expectations

- Students will be given areas of research to carry out relating to food
- They should be taking an interest in and reading about food and consumer related issue within the media
- Students should be finding opportunities to explore new and different foods outside of the lesson
- Student will be expected to attend additional sessions if needed to complete work

Possible next level of study - Higher Health and Food Technology/National 4/5 Hospitality

Possible career paths - There are a varied and wide ranging number of career paths that success.

Food Scientist/Product development/Dietetics and nutrition/Medicine and nutrition/Social work
Education .

Hospitality - Practical Cookery National 4/5



Course Description

This Course aims to develop learners' life skills and enhance their personal effectiveness in terms of cookery and to provide a set of skills for those who wish to progress to further study in the hospitality context. In preparing learners for life, the Course anticipates their future needs in that it enables them to learn how to prepare and cook food for themselves and others. It also develops their organisational skills, which have an application in a variety of contexts.

The Course aims to enable learners to:

- use a range of cookery skills, food preparation techniques and cookery processes when following recipes
- select and use ingredients to produce and garnish or decorate dishes
- develop an understanding of ingredients and their uses and an awareness of responsible sourcing
- develop an awareness of current dietary advice relating to the use of ingredients
- work safely and hygienically.

Mandatory Units - There are 3 mandatory units

- Cookery Skills, Techniques and Processes
- Understanding and Using Ingredients
- Organisational Skills for Cooking
- Course Assessment: Producing a Meal

Assessment - To achieve the course at the following levels -

Nat 5 – Practical exam activity (63%) Theory Exam (23%) Assignment (14%) (A-D)

Nat 4 – Pass all assessment for the required units and end of course assignment (Added Value Unit)

Home Study Expectations

- Students will be given areas of research to carry out relating to food
- They should be taking an interest in food and ingredients and taking an active part in opportunities to cook outside of school
- Student will be expected to attend additional session if needed to complete outstanding work

Additional Information

Possible next level of study National 5 Hospitality/National 4/5/Higher Health and Food Technology

Possible career paths There are a varied and wide ranging number of career paths that success.

- Hospitality and Hotel Management/Product development/Chef/Food stylist/photographer/Education and training.

Leadership Award SCQF Level 5/6

Entry requirements

Only available to S5/6 students

Students would benefit from having achieved English at Nat 5/Higher.

Students should have an interest in leading events and developing their communication and organisational skills throughout the year.

Course Description

This course will offer motivated students the opportunity to develop their leadership skills. This SQA award develops the essential skills of leadership: communication, organisation and motivation, in addition to this, students will grow in confidence and self-belief. The personal journeys that students undertake whilst learning to lead, will stand them in good stead for their future careers and life itself.

Mandatory Units - There are 2 mandatory units

- Leadership; An introduction
- Leadership in Practice

Assessment

There will be no final exam as a series of unit assessments will be gained throughout the school year.

- Students will lead a variety of school events i.e. charity fund raising, transition work with cluster primaries, school assemblies.
- Students must complete research on Leadership Styles, skills and qualities and then present their findings to the class.
- Students must complete a leadership report and folio.
- Attendance rate must be over 90% for the year.

Home Study Expectations

Students can expect to be doing at least 2 hours of homework per week which will include the following:

- Students must research prominent leaders and different leadership styles to deliver a class presentation
- Engage in regular self-evaluation tasks
- Students must work as part of a team in planning an event.

Possible next level of study National courses in Physical Education.

Possible Career Paths

There are a varied and wide-ranging number of career paths that success in this Leadership award can lead to including: -

- University course in PE, Sport, Health or associated disciplines
- College course in Sports Coaching & Development (HNC/HND)
- A career in the Leisure or associated Industry

Physical Education - National 3/4/5



Course Description

In this Course, and its component Units, there will be an emphasis on skills development and the application of those skills. The main purpose of the course is to develop and demonstrate movement and performance skills in physical activities. By engaging in practical activities, learners can demonstrate initiative, decision-making and problem-solving. Learners will consider the effects of mental, emotional, social and physical factors on performance, and will develop an understanding of how to plan for, monitor, record and evaluate the process of personal performance development.

Mandatory units

There are 2 mandatory units at N3/4

- Physical Education: Performance Skills
- Physical Education: Factors Impacting on Performance

Course assessment at National 3/4 is an added value unit in Practical Performance

At National 5 assessment of the course comprises of 2 components:

- Portfolio - 50%
- Performance (2 activities) - 50%

Home Study Expectations

Students can expect to be doing at least 2 hours of homework per week, which will include the following:

- Students must regularly read course notes as well as using recommended websites.
- Candidates are encouraged to participate in sport out with PE
- National 5 students are expected to plan and manage their Portfolios throughout the year (50% of course award)

Possible next level of study - Higher Physical Education, Sport & Recreation Level 5, Leadership Award.

Possible career paths - There are a varied and wide-ranging number of career paths that success in Physical Education can lead to including – PE teaching, Sports coaching, Sports science, Police, Personal trainer, Physiotherapy and Psychology.

Physical Education - Higher



Entry Requirements

Students considering this course should have gained a Pass at National 5. If you do not have a National 5 award in this subject, then discussion and approval from the Faculty CL is needed before entry into Higher can be confirmed.

Course Description

This course will offer students the opportunity to study physical education at a challenging level. The course will have performance as its prime focus. Students will be engaged in integrated practical experiential studies which will advance their skills and techniques while developing knowledge and understanding, evaluating and analysis competencies. The course will contribute to the personal and social development of students.

Mandatory units

This course comprises 1 mandatory unit

- Physical Education: Performance Skills at higher level

Assessment

- Component 1 — performance, two activities 60 marks (50%)
- Component 2 — question paper 50 marks (50%)

Total marks 110 marks

Home Study Expectations

Students can expect to be doing at least 2 hours of homework per week which will include the following:

- Students must regularly read course notes as well as sporting articles/texts provided.
- Any candidate that does not participate in sport outwith school is encouraged to be part of our Active Schools program.
- Students are expected to complete all written tasks to a high level, including past paper questions.
- Students must maintain a neat and organised folder containing coursework.

Possible next level of study - Leadership Award SCQF Level 6

Possible career paths There are a varied and wide-ranging number of career paths that success in Physical Education can lead to including –

- An HNC/HND in associated subject areas
- A degree in Physical Education or related discipline
- A career in amateur/professional sport or dance
- Employment in the fitness, health, leisure and recreation industries
- Employment in sports/dance development.

Sports & Recreation Skills for Work Level - 4/5



Entry requirements

Students will be expected to have demonstrated in school and beyond, an interest in sport, physical activity and health & wellbeing. The opportunity to develop communication, leadership and responsibility should also be appealing.

Course Description

This course is an introductory qualification. It develops the skills, knowledge and attitudes, needed for work in this industry.

The Level 5 Course content covers the main practical activities involved in carrying out a supportive role in sport and recreation environments: sourcing information about career pathways, identifying and reviewing skills and experiences; assisting with planning, setting up and delivering activity sessions; dealing effectively and courteously with clients; assisting with emergency procedures; assisting with setting up, dismantling and checking equipment and resources; helping to plan and review a training programme; and establishing good practice in identifying and reviewing goals. The Course also covers health and safety legislation and risk assessment.

The Level 4 course content covers assisting with planning, setting up and delivering activity sessions dismantling and checking equipment and resources assisting with accident and emergency procedures dealing effectively and courteously with clients, staff and others helping to plan and review a personal training programme establishing good practice in setting and reviewing personal goals.

Mandatory units

At Levels 4 and 5 there are 4 Mandatory units:

- Sport and Recreation: Assist with a Component of Activity Sessions
- Sport and Recreation: Employment Opportunities in the Sport and Recreation Industry
- Sport and Recreation: Assist with Fitness Programming
- Sport and Recreation: Assist with Daily Centre Duties

Assessment -There will be no final exam as a series of unit assessments will be gained throughout the school year. Units will be pass/fail throughout the course.

Home Study Expectations

- Within the mandatory unit's pupils will be required to research and plan in their own time.
- Learners will assist in the planning and delivery of a component within activity sessions for both a group and a single client. This will involve pupils researching lesson plans and doing some self-study.
- Learners will source information about career pathways and identify the skills.
- Learners, working with the person responsible, will learn how to develop and organise a physical training plan for a client.

NPA in Exercise and Fitness Leadership - Level 6



Entry Requirements

Entry for the NPA will be through departmental recommendation. Students should have an interest in the sport and fitness industry. Students should have a C pass at National 5 PE or a Pass in Sport and Recreation. Due to the high level of anatomy and physiology on the course a N5 Biology award would be advantageous.

Course Description

The course is a step up from the Skills for Work Sport and Recreation course and is designed to allow students the opportunity to develop knowledge and understanding of how the body works during exercise.

A significant aspect of the course will be developing the candidate's ability to lead sessions in a variety of fitness locations and situations.

The course consists of five units of which three must be completed. This NPA has the equivalent tariff points associated with a C pass at Higher PE.

The units are:

- Exercise and Fitness – Cardiovascular Fitness (Higher)
- Exercise and Fitness – Fixed Weight Training (Higher)
- Exercise and Fitness – Free Weight Training (Higher)
- Exercise and Fitness – Circuit Training (Higher)
- Exercise and Fitness – Exercise to Music (Higher)

The units selected for study will be the ones that best suit the candidates and the facilities that are available.

Assessment Details

All assessment is internally marked and achieved through a variety of means. Examples of the methods of assessment are closed book assessments, open book assessments, written essays, observations, etc.

Possible Career Pathways

The NPA is a 'stepping stone' to allow students to progress to a higher level of qualification required in the Exercise and Fitness industry.

Possible employment routes are: Fitness instructor – Gym, aquatic or music based Personal Trainer, Sports coaching, Sports development facilitator, Sports facility operator and manager Sports administrator.

Applications of Mathematics National 3/4/5

Entry Requirements

App of Maths National 5: Minimum requirement of a pass at National 4 or App National 4 or successful completion of Level 4.

App of Maths National 4: Minimum requirement of successful completion of Level 3.

Course Description

The Applications of Maths National 5 and National 4 courses are of an equivalent mathematical standard to Maths National 5 and Maths National 4. They build on the prior knowledge gained at Maths National 5 or 4, or Applications of Maths National 3 or 4. Students will use a range of mathematical concepts and relationships, applying skills in finance, geometry, measurement and statistics within real-life mathematical contexts. These courses are less algebraic than Maths courses, designed for students who wish to continue in maths without pursuing further education or career in science or engineering. Maths National 5 or Applications of Maths National 5 are essential for anybody who wishes to pursue a career in teaching.

Units

Application of Maths Nat 3

Numeracy

Manage Money & Data

Shape, Space & Measures

Application of Maths Nat 4

Numeracy

Finance & Statistics

Geometry & Measure

Added Value Unit

Application of Maths Nat 5

There are no units at National 5

Assessment

Applications of Maths National 5: Students are assessed by a final examination at the end of the year. This examination makes up 100% of the final mark.

The final examination comprises two papers:

- Non-Calculator (45 marks)
- Calculator (65 marks)

Any student who does not sit the final exam has the option of completing 'Units Only'. These assessments are completed internally.

Applications of Maths National 4: Students are assessed on the outcomes for each unit throughout the year, with the Added Value Unit assessment at the end of the year. These assessments are completed internally.

Applications of Maths National 3: Students are assessed on the outcomes for each unit throughout the year. These assessments are completed internally.

Home Study Expectations - Students can expect to be doing at least 1½ hours of homework per week for Applications of Maths Nat 5, 1 hour for Applications of Maths Nat 4, and ½ an hour for Applications of Maths Nat 3 which will include a selection of:

- End of Topic formal homework/Consolidation of notes from previous week /Completion of exercises as home practice.

Maths National 4/5

Entry requirements

- National 5: Minimum requirement of a pass at National 4, including a first-time pass of the AVU, or successful completion of Level 4.
- National 4: Minimum requirement of successful completion of Level 3.

Course Description

The National 5 and National 4 Mathematics courses build on the prior knowledge gained at either National 4 or Level 4, or Level 3 respectively. Students will use a range of mathematical concepts and relationships, applying skills in algebra, geometry, trigonometry and statistics within mathematical contexts. They will select and apply skills in numeracy and use reasoning skills to extract and interpret information. The courses are designed as a more algebraic alternative to Applications of Maths courses. Any student who wishes to study maths or any sciences at Higher should complete National 5 Maths. National 5 Maths or Applications of Maths National 5 are essential for anybody who wishes to pursue a career in teaching.

Units

National 5 Mathematics - there are no compulsory units at National 5

National 4 Mathematics:

- Numeracy
- Expressions & Formula
- Relationships
- Added Value Units

Assessment

National 5: Students are assessed by a final examination at the end of the year. This examination makes up 100% of the final mark.

The final examination comprises two papers:

- Non-Calculator (50 marks)
- Calculator (60 marks)

(Any student who does not sit the final exam has the option of completing 'Units Only'. These assessments are completed internally.)

National 4: Students are assessed on the outcomes for each unit throughout the year, with the Added Value Unit assessment at the end of the year. These assessments are completed internally.

Home Study Expectations

Students can expect to be doing at least 1-1½ hours of homework per week which will include a selection of:

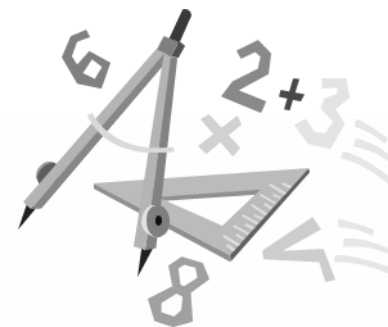
- End of Topic formal homework
- Consolidation of notes from previous week
- Completion of exercises as home practice

Possible next level of study

National 5: Higher Maths, National 5 Applications of Maths

National 4: National 5 Maths, National 5 Applications of Maths

Mathematics - Higher



Entry Requirements

Minimum requirement of - a C in National 5 Mathematics for Higher over 1 year.
a D in N5 Mathematics for Higher over 2 years.

Course Description

Higher Maths is designed as a natural progression for those successful at National 5 Maths. Students will use a range of complex mathematical concepts and relationships, applying skills in algebra, geometry, trigonometry, calculus and statistics within mathematical contexts. They will think logically, analysing problems and justifying solutions. Higher Maths is vital for any student wishing to pursue further education and careers in science, engineering, technology and architecture.

Assessment

The assessment of Higher Mathematics consists only of an external exam.

The final examination comprises two papers:

- Non-Calculator (70 marks)
- Calculator (80 marks)

Home Study Expectations

Students can expect to be doing at least 2 hours of homework per week which will include a selection of:

- End of Topic formal homework
- Consolidation of notes from previous week
- Completion of exercises as home practice

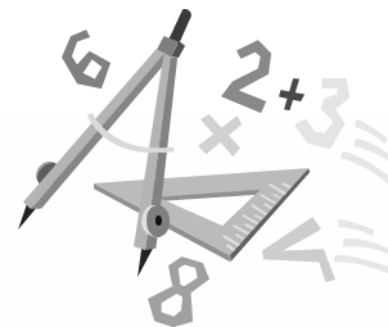
Possible next level of study - Advanced Higher Mathematics

Possible career paths

Degrees: Maths, Physics, Chemistry, Engineering, Medicine, Veterinary Medicine

Careers: Actuary, Chartered Accountant, Banking/Finance, Engineering, Maths Teacher, Research/Statistics

Mathematics - Advanced Higher



Entry Requirements

Minimum requirement of a C in Higher Mathematics

Course Description

Advanced Higher Maths is designed as a natural progression for those successful at Higher Maths. Students will use a range of highly complex mathematical concepts and relationships, applying skills in algebra, geometry, trigonometry and calculus within mathematical contexts. It will extend their thinking and knowledge, and further develop the rigour and precision of mathematical proof and reasoning. They will think logically, analysing problems and justifying solutions. Advanced Higher Maths is a perfect course for any student wishing to pursue further education and careers in science, engineering, technology and architecture.

Assessment

The assessment of Advanced Higher Mathematics consists only of an external exam.

The final examination comprises two papers:

- Non-Calculator (35 marks)
- Calculator (80 marks)

Home Study Expectations

Students can expect to be doing at least 2 hours of homework per week which will include a selection of:

- End of Topic formal homework
- Consolidation of notes from previous week
- Completion of exercises as home practice

Possible next level of study N/A

Possible career paths

Degrees: Maths, Physics, Chemistry, Engineering, Medicine, Veterinary Medicine

Careers

Actuary, Chartered Accountant, Banking/Finance, Engineering, Maths Teacher, Research/Statistics